



Front Load Shut-off Gun

Model **33425**

FEATURES:

- Balanced front load design reduces operation fatigue.
- Lightweight high impact nylon-blend body for durability.
- Secure grip and quick release safety lock for operator comfort and safety.
- Optional insulated lance extensions offer cleaning flexibility.

SELECTION: Select a gun to match your system flow and pressure requirements, temperature and function being performed.

INSTALLATION: For safety and protection of the pump and system, a **pressure relief device** must be used with a high pressure shut-off gun. When the gun is shut-off, pressure spikes could result in severe damage to the pump or other components in the system without this device. Carefully examine the functioning of the system to determine the best type of relief valve to be used. If the system is a **single gun system** and the drive source will continue to run while the gun is intermittently shut-off, a pressure unloader should be installed. If **multiple guns** are in the system, a regulator or special multi-gun unloader should be used. The guns should be reasonably

SPECIFICATIONS

	U.S. Measure	Metric Measure
Maximum Flow.....	8 GPM	(30 L/M)
Maximum Pressure	2900 PSI	(200 BAR)
Maximum Temperature.....	210°F	(100°C)
Inlet Port.....	3/8" BSPF	(3/8" BSPF)
Outlet Port.....	1/4" NPT	(1/4" NPT)
Weight	9.6 oz.	(0.27 kg)
Dimensions	7.5" x 6.0" x 1.2"	(190x152x30 mm)

synchronized in flow to avoid large amounts of by-pass from unused guns for prolonged periods. This may prematurely fatigue the pressure relief device or generate excessive heat in the by-pass mode. (See PUMP PROTECTORS for additional information.)

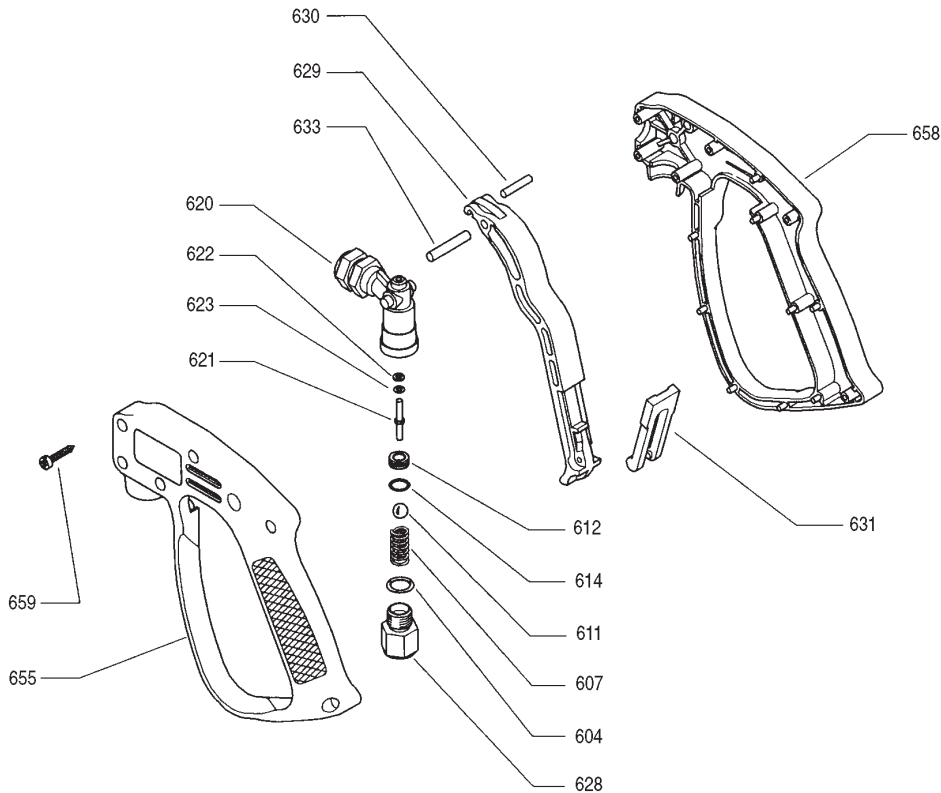
OPERATION: Flow through the gun occurs by squeezing the trigger on the gun. This allows ball to back off the seat and permits the pumped fluid to flow through the valve body chamber and out the discharge port of the gun. Releasing the trigger shuts off the flow.

CAUTION

When gun is not in use, set safety trigger lock to avoid accidental high pressure operation and possible damage or bodily harm.

“Customer confidence is our greatest asset”

EXPLODED VIEW



PARTS LIST

ITEM	P/N	MATL	DESCRIPTION	QTY
604	33458	NBR	O-Ring, Inlet Fitting	1
607	36647	SS	Spring	1
611	33459	SS	Ball	1
612	34328	SS	Seat	1
614	34327	NBR	O-Ring, Seat	1
620	—	BB	Body	1
621	34321	SS	Rod, Actuator	1
622	34324	PTFE	Back-up-Ring, Stem	1
623	33431	FPM	O-Ring, Stem	1
628	33787	BB	Fitting, Inlet (3/8" BSPF)	1
629	—	NY	Trigger, Black	1
630	31653	SS	Pin, Trigger	1
631	33650	NY	Latch, Safety, Red	1
633	36657	BB	Pin, Trigger	1
655	33785	NY	Handle, Left, Black	1
658	33786	NY	Handle, Right, Black	1
659	32877	STZP	Screw, Self Threading (M3.5x18)	6
665	34434	—	Handle Assy (Incls: 655,658,659)	1
667	34435	—	Trigger Assy (Incls: 629,630,631,633)	1
668	34427	—	Kit, Repair (Incls: 604,611,612,614,621,622,623)	1

MATERIAL CODES (Not Part of Part Number):

BB=Brass FPM=Fluorocarbon (Viton®) NBR=Medium Nitrile (Buna-N) NY=Nylon
PTFE=Polytetrafluoroethylene (Teflon®) SS=316SS STZP=Steel/Zinc Plated

CAUTION

Activate safety latch when not in use
to avoid accidental injury.

WARNING

Severe injury can occur with high pressure spray.
Do not allow spray to contact any part of body.

TROUBLESHOOTING

Water leaking out the discharge of the gun.

- Object lodged between the seat and ball.
- Seat Worn.
- O-Ring on actuator rod worn.

Water leaking out the lever area.

- O-Ring on actuator rod worn.

WARRANTY

90 Day Warranty

Refer to complete Cat Pump Warranty for further information.

Products described hereon are covered by one or more of the following U.S. patents 3558244, 3652188, 3809508, 3920356, 3930756 and 5035580

Dec 1998 12813

World Headquarters

CAT PUMPS

1681 - 94th Lane N.E. Minneapolis, MN 55449-4324

Phone (612) 780-5440 — FAX (612) 780-2958

e-mail: sales@catpumps.com

www.catpumps.com

International Inquiries

FAX (612) 785-4443

e-mail: intlsales@catpumps.com



The Pump with "Nine Lives"

CAT PUMPS (U.K.) LTD.

1 Fleet Business Park, Sandy Lane, Church Crookham, Fleet
Hampshire GU13 0BF, England

Phone Fleet 44 1252-622031 — Fax 44 1252-626655

N.V. CAT PUMPS INTERNATIONAL S.A.

Heiveldkens 6A, 2550 Kontich, Belgium
Phone 32-3-450.71.50 — Fax 32-3-450.71.51

e-mail: cpi@catpumps.be

CAT PUMPS DEUTSCHLAND GmbH

Buchwiese 2, D-65510 Idstein, Germany
Phone 49 6126-93030 — Fax 49 6126-930333

e-mail: catpumps@t-online.de