



Custom-II Shut-off Guns

Standard Model 36130
Weep Model 36131

FEATURES

- Durable Zytel body with new heat resistant Arnite® trigger means longer life, less breakage.
- Contour design and smooth trigger action reduces operator fatigue.
- Quality construction stainless steel ball and seat assures thousands of continuous cycles.
- Choice of standard or freeze protection “weep” version.
- Special safety-lock prevents unintentional operation.

SELECTION: Select a gun to match your system flow and pressure requirements, temperature and function being performed.

INSTALLATION: Install the appropriate relief valve when using a shut-off gun to avoid pressure spikes when the gun is shut off. Severe damage can occur to your system without this device. When operating in freezing conditions, use the weep version. For field conversion a standard gun may be modified to weep by

SPECIFICATIONS

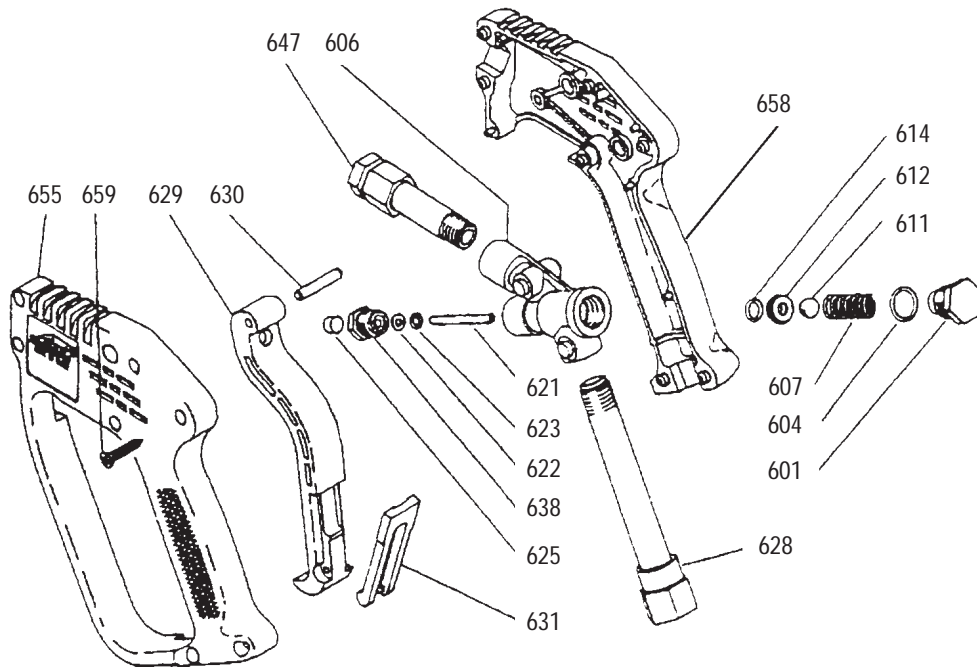
	U.S. Measure	Metric Measure
Maximum Flow	10.5 GPM	(40 L/M)
Maximum Pressure.....	4000 PSI	(280 BAR)
Maximum Temperature.....	300° F	(150°C)
Inlet Port (1)	3/8" NPT	(3/8" NPT)
Discharge Port (1).....	1/4" NPT	(1/4" NPT)
Weight.....	23.4 oz.	(0.728 kg)
Dimensions	8.26" x 5.39" x 1.25" (210 x 137 x 32 mm)	

inverting the standard seat to the notched weep side. It is suggested the color coded trigger also be used when converting to weep.

OPERATION: Flow through the gun occurs by squeezing the trigger on the gun. This activates the actuator rod, lifting the ball off the seat, allowing the pumped fluid to flow through the valve body chamber in the gun. Releasing the trigger shuts off the flow.

“Customer confidence is our greatest asset”

EXPLODED VIEW



PARTS LIST

ITEM	P/N	MATL	DESCRIPTION	QTY	ITEM	P/N	MATL	DESCRIPTION	QTY
601	33377	BB	Nut, Spring Retaining (M16)	1	631	33312	NY	Latch, Safety, Black	1
604	33378	NBR	O-Ring, Retaining Nut	1	638	33313	NY	Latch, Safety, Blue, Weep	1
606	—	BB	Body	1	647	31076	S	Plug (1/4")	1
607	33379	SS	Spring	1	647	32006	BB	Fitting, Discharge (1/4" NPTF)	1
611	31075	S	Ball	1	655	—		Handle, Left	1
612	31004	S	Seat, Notched	1	658	—		Handle, Right	1
614	32008	NBR	O-Ring, Seat	1	659	32877	STZP	Screw, Phillips (M3.5x18)	7
621	31073	S	Rod, Actuator	1	665	32400		Assy, Handle (Incls: 655, 658, 659)	
622	31074	PTFE	Back-up-Ring, Actuator Rod	1	667	33316		Assy, Trigger, Black (Incls: 625, 629, 631)	
623	31010	FPM	O-Ring, Actuator Rod	1	668	33315		Assy, Trigger, Blue (Incls: 625, 629, 631)	
625	33654		Striker	1	668	32007		Kit, Repair - Prior to 796	1
628	33305	BB	Fitting, Inlet (3/8" NPTF)	1				(Incls: 601, 604, 611, 612, 614, 621, 622, 623)	
629	33306	NY	Trigger, Black	1		33407		Kit, Repair - After 796	1
630	33676	BB	Pin (5x27.5 mm)	1				(Incls: 601, 604, 611, 612, 614, 621, 622, 623)	

MATERIAL CODES (Not Part of Part Number):

BB=Brass FPM=Fluorocarbon (Viton®) NBR=Medium Nitrile (Buna-N) NY=Nylon PTFE=Polytetrafluoroethylene (Teflon®) S=304SS SS=316SS STZP=Steel/Zinc Plated

WARNING

**Severe injury can occur with high pressure spray.
Do not allow spray to contact any part of body.**

TROUBLESHOOTING

Water leaking out the discharge of the gun

- Object lodged between the seat and ball.
- Seat worn.
- O-Ring under seat worn.

Water leaking out the lever area

- O-Ring around push rod worn.

OPTIONAL LANCES

32036	Square Insulated Single Lance - Black—36"-1/4"
32042	Square Insulated Single Lance - S.S.—36"-1/4"
33201	Square Insulated Single Lance - Zinc Coated—33"-1/4"
33200	Square Insulated Single Lance - S.S.—43"-1/4"
36264	Molded Single Lance - Zinc Coated—24"-1/4" BSP
36267	Molded Single Lance - Black—28"-1/4" BSP
36268	Molded Single Lance - Zinc Coated—48"-1/4" BSP

WARRANTY

90 Day Warranty

Refer to complete Cat Pump Warranty for further information.

Products described hereon are covered by one or more of the following U.S. patents 3558244, 3652188, 3809508, 3920356, 3930756 and 5035580

Apr 1998 3876

World Headquarters

CAT PUMPS

1681 - 94th Lane N.E. Minneapolis, MN 55449-4324

Phone (612) 780-5440 — FAX (612) 780-2958

e-mail: sales@catpumps.com

www.catpumps.com

International Inquiries

FAX (612) 785-4443

e-mail: intlsales@catpumps.com



The Pump with "Nine Lives"

CAT PUMPS (U.K.) LTD.

1 Fleet Business Park, Sandy Lane, Church Crookham, Fleet

Hampshire GU13 0BF, England

Phone Fleet 44 1252-622031 — Fax 44 1252-626655

N.V. CAT PUMPS INTERNATIONAL S.A.

Heiveldekens 6A, 2550 Kontich, Belgium

Phone 32-3-450.71.50 — Fax 32-3-450.71.51

e-mail: cpi@catpumps.be

CAT PUMPS DEUTSCHLAND GmbH

Buchwiese 2, D-65510 Idstein, Germany

Phone 49 6126-93030 — Fax 49 6126-930333

e-mail: catpumps@t-online.de