

38 Frame Block-Style Stainless Steel Plunger Pump

Standard Models 3821, 3831

Flushed Models 3821K, 3831K

FEATURES

Superior Design

- Triplex plunger design gives smoother liquid flow.
- Inlet and discharge valve assemblies interchange for easier maintenance.
- Oil bath crankcase assures optimum lubrication.
- Close tolerance concentricity of the ceramic plunger maximizes seal life.
- **Standard Models:** Lo-Pressure Seals and V-Packings are completely lubricated and cooled by the liquid being pumped.
- **Flushed Models:** Special ported inlet manifold permits fluid to cool or flush between V-Packings and Lo-Pressure Seals providing protection against high temperatures or contaminating pumped liquids.

Quality Materials

- All 316 stainless steel valves are heat treated and seats are roller burnished for a positive seal and extended valve life.
- 316 SSL block-style manifolds for strength and corrosion resistance.
- Special concentric, high density, polished, graphite impregnated, solid ceramic plungers are abrasion resistant and result in extended seal life.
- Specially formulated, CAT PUMP exclusive, V-Packings offer unmatched performance and seal life.
- Die cast aluminum crankcase provides high strength, minimum weight and precision tolerance control.
- Chrome-moly crankshaft gives unmatched strength and surface hardness.
- Oversized crankshaft bearings with greater loading capacity means longer bearing life.

Easy Maintenance

- Wet-end is easily serviced without entering crankcase, requiring less time and effort.
- Preset packings mean no packing gland adjustment is necessary, reducing maintenance costs.

DETERMINING THE PUMP R.P.M. $\frac{\text{Rated G.P.M.}}{\text{Rated R.P.M.}} = \frac{\text{"Desired" G.P.M.}}{\text{"Desired" R.P.M.}}$

DETERMINING THE REQUIRED H.P. $\frac{\text{GPM} \times \text{PSI}}{1460} = \text{Electric Brake H. P. Required}$

DETERMINING MOTOR PULLEY SIZE $\frac{\text{Motor Pulley O.D.}}{\text{Pump R.P.M.}} = \frac{\text{Pump Pulley O.D.}}{\text{Motor R.P.M.}}$

Note: Consult engine manufacturer when using gas or diesel engine. Refer to pump Service Manual for important Inlet Condition Check-List, Start-up Procedure, Tech Bulletins and Pump Maintenance information.

SPECIFICATIONS

	U.S. Measure	Metric Measure
MODEL 3821, 3821K		
Flow.....	23 GPM	(87 L/M)
Pressure Range.....	100 to 2000 PSI	(7 to 140 BAR)
Bore.....	1.260"	(32 mm)

MODEL 3831, 3831K		
Flow.....	36 GPM	(140 L/M)
Pressure Range.....	100 to 1200 PSI	(7 to 85 BAR)
Bore.....	1.575"	(40 mm)

COMMON SPECIFICATIONS

Inlet Pressure	Flooded to 70 PSI*	(Flooded to 4.9 BAR)
RPM	800 RPM	(800 RPM)
Stroke.....	1.890"	(48 mm)
Crankcase Capacity.....	4.2 Qts.	(4 L)
Maximum Fluid Temperature	160°F	(71°C)
Inlet Ports (2)	1-1/2" NPT	(1-1/2" NPT)
Flushing Ports (2)	1/2" NPTF	(1/2" NPTF)
Discharge Ports (2)	1" NPT	(1" NPT)
Pulley Mounting	Either Side	(Either Side)
Shaft Diameter	1.378"	(35 mm)
Weight.....	167 lbs.	(75 kg)
Dimensions	24.4" x 18.11" x 9.37"	(620 x 460 x 239 mm)

* "K" Models have special inlet ports for flushing and cooling and are suitable for high inlet pressure liquids. Call for clarification.

HORSEPOWER REQUIREMENTS

MODEL	FLOW		PRESSURE						RPM
			PSI 800	PSI 1000	PSI 1200	PSI 1500	PSI 1800	PSI 2000	
	U.S. GPM	L/M	BAR 55	BAR 70	BAR 85	BAR 105	BAR 125	BAR 140	
3821	23	87	N/A	N/A	N/A	23.7	28.4	31.6	800
3821K	20	76	N/A	N/A	N/A	20.6	24.7	27.5	696
	18	68	N/A	N/A	N/A	18.6	22.3	26.3	626
3831	36	140	19.8	24.7	29.7	N/A	N/A	N/A	800
3831K	30	114	16.5	20.6	24.7	N/A	N/A	N/A	667
	25	95	13.7	17.2	20.6	N/A	N/A	N/A	556

See complete Drive Packages [Incls: Pulleys, Belts, Hubs, Key] Tech Bulletin 03.

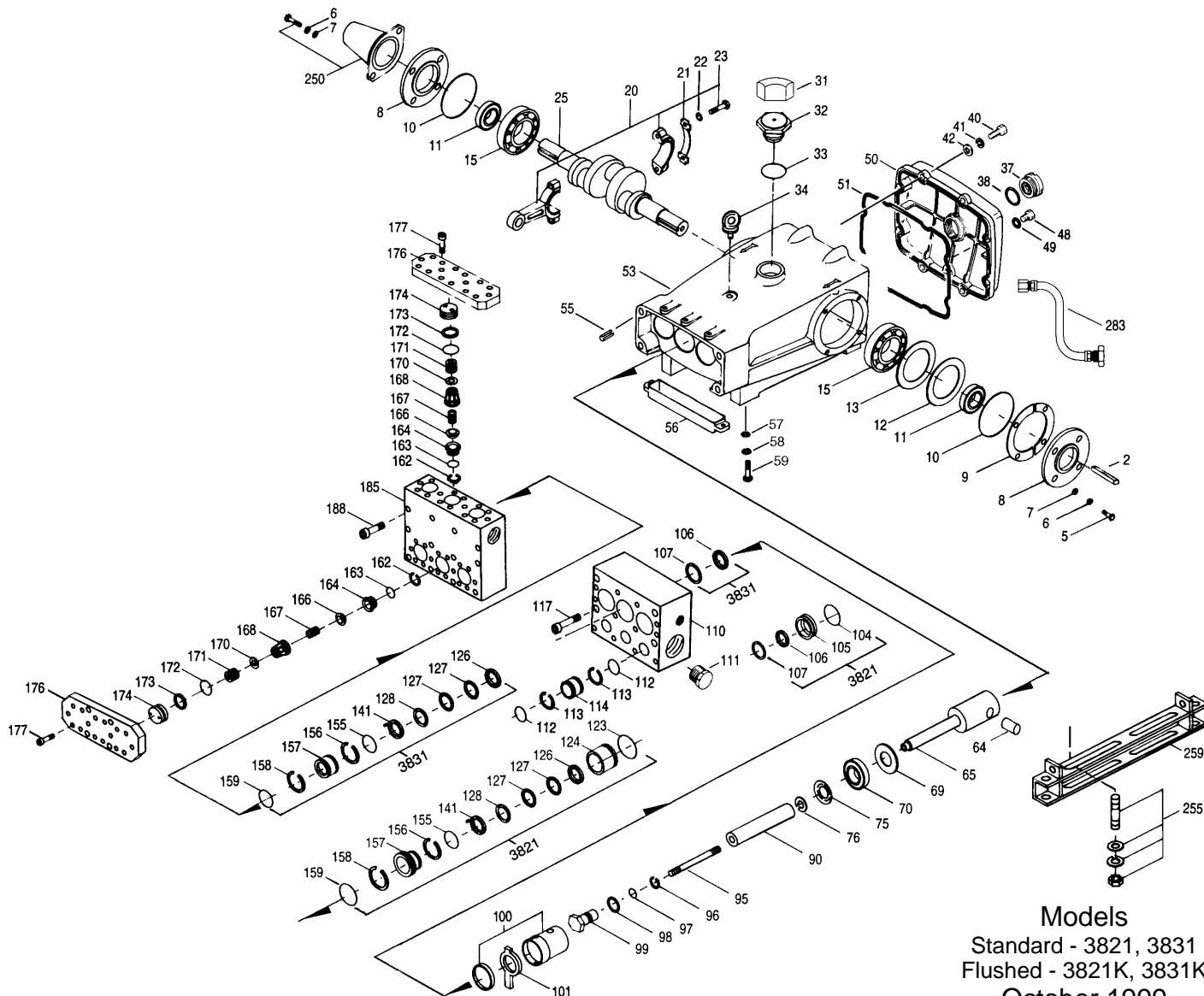
"Customer confidence is our greatest asset"

PARTS LIST

ITEM		MATL	3821K	MATL	3831	MATL	3831K	MATL	DESCRIPTION	QTY
• 2	34021	STL	34021	STL	34021	STL	34021	STL	Key (M10x8x70)	1
5	118824	S	118824	S	118824	S	118824	S	Screw, HHC (M8x25)	8
6	15846	S	15846	S	15846	S	15846	S	Lockwasher, Split (M8)	8
7	13534	S	13534	S	13534	S	13534	S	Washer (M8)	8
8	44542	AL	44542	AL	44542	AL	44542	AL	Cover, Bearing	2
	701138	F	701138	F	701138	F	701138	F	Cover, Bearing (Use w/701137, 39, 40, 45, 47)	2
9	44543		44543		44543		44543		Shim, Bearing, Cover	4
10	12398	NBR	12398	NBR	12398	NBR	12398	NBR	O-Ring, Bearing, Cover - 70D	2
11	13296	NBR	13296	NBR	13296	NBR	13296	NBR	Seal, Oil, Crankshaft	2
15	29326	STL	29326	STL	29326	STL	29326	STL	Bearing, Roller	2
20	46611	HS	46611	HS	46611	HS	46611	HS	Rod, Connecting Assembly	3
21	44940	STZP	44940	STZP	44940	STZP	44940	STZP	Washer, Locking (M10)	3
22	43641	STZP	43641	STZP	43641	STZP	43641	STZP	Washer (M10)	6
23	88155	STL	88155	STL	88155	STL	88155	STL	Screw, HH (M10x60)	6
25	29325	FCM	29325	FCM	29325	FCM	29325	FCM	Crankshaft, Dual End	1
31	828710		828710		828710		828710		Protector, Oil Cap	1
32	43211	ABS	43211	ABS	43211	ABS	43211	ABS	Cap, Oil Filler	1
33	14177	NBR	14177	NBR	14177	NBR	14177	NBR	O-Ring, Oil Filler Cap - 70D	1
34	44319	STZP	44319	STZP	44319	STZP	44319	STZP	Bolt, Eye (M12)	1
35	701145	AL	701145	AL	701145	AL	701145	AL	Rivet, Serial Plate (Use w/701137, 38, 39, 40, 47)	4
36	701147	AL	701147	AL	701147	AL	701147	AL	Plate, Name (Use w/701137, 38, 39, 40, 45)	1
37	92241		92241		92241		92241		Gauge, Oil Bubble	1
38	44428	NBR	44428	NBR	44428	NBR	44428	NBR	Gasket, Flat, Flex.	1
40	118824	S	118824	S	118824	S	118824	S	Screw, HHC (M8x25)	8
41	15846	S	15846	S	15846	S	15846	S	Lockwasher, Split (M8)	8
42	13534	S	13534	S	13534	S	13534	S	Washer (M8)	8
48	25625	STCP	25625	STCP	25625	STCP	25625	STCP	Plug, Drain (1/4"x11)	1
49	23170	NBR	23170	NBR	23170	NBR	23170	NBR	O-Ring, Drain Plug - 70D	1
50	45936	AL	45936	AL	45936	AL	45936	AL	Cover, Rear	1
	701139	F	701139	F	701139	F	701139	F	Cover, Rear (Use w/701137, 38, 40, 45, 47)	1
51	16612	NBR	16612	NBR	16612	NBR	16612	NBR	O-Ring, Cover, Rear - 70D	1
• 53	44559	AL	44559	AL	44559	AL	44559	AL	Crankcase	1
	701137	F	701137	F	701137	F	701137	F	Crankcase (Use w/701138, 39, 40, 45, 47)	1
55	27488	S	27488	S	27488	S	27488	S	Pins, Guide	2
56	27790	PE	27790	PE	27790	PE	27790	PE	Pan, Oil	1
57	19933	S	19933	S	19933	S	19933	S	Washer (M6)	2
58	15849	S	15849	S	15849	S	15849	S	Lockwasher, Split (M6)	2
59	89618	S	89618	S	89618	S	89618	S	Screw, HH (M6x16)	2
64	43864	S	43864	S	43864	S	43864	S	Pin, Rist	3
65	45116	SSZZ	45116	SSZZ	45116	SSZZ	45116	SSZZ	Rod, Plunger	3
69	29338	S	29338	S	29338	S	29338	S	Washer, Oil Seal	3
70	100488	NBR	100488	NBR	100488	NBR	100488	NBR	Seal, Oil, Crankcase - 70D	3
	44739	FPM	44739	FPM	44739	FPM	44739	FPM	Seal, Oil, Crankcase	3
75	43865	S	43865	S	43865	S	43865	S	Slinger, Barrier	3
88	45676	SS	45676	SS	45676	SS	45676	SS	Washer, Keyhole (M16)	3
90	43957	CC	43957	CC	43957	CC	43957	CC	Plunger (M32x145) (M40x145)	3
95	89778	SS	89778	SS	89778	SS	89778	SS	Stud, Plunger Retainer (M10x135)	3
96	20189	PTFE	20189	PTFE	20189	PTFE	20189	PTFE	Back-up-Ring, Plunger Retainer	3
97	11345	NBR	11345	NBR	11345	NBR	11345	NBR	O-Ring, Plunger Retainer - 70D	3
	11375	FPM	11375	FPM	11375	FPM	11375	FPM	O-Ring, Plunger Retainer - 70D	3
	701490	EPDM	701490	EPDM	701490	EPDM	701490	EPDM	O-Ring, Plunger Retainer - 70D	3
98	44085	SS	44085	SS	44085	SS	44085	SS	Gasket	3
99	44084	SS	44084	SS	44084	SS	44084	SS	Retainer, Plunger (M10)	3
100	814279	PVDF	814279	PVDF	814279	PVDF	814279	PVDF	Retainer, Seal, 2 Pc. (Incls: 44119, 44367)	3
101	44106	FBR	44106	FBR	44112	FBR	44112	FBR	Wick , Long Tab	3
104	43875	NBR	43875	NBR	—	—	—	—	O-Ring, Inlet Adapter - 70D	3
	44826	FPM	44826	FPM	—	—	—	—	O-Ring, Inlet Adapter - 70D	3
	701656	EPDM	701656	EPDM	—	—	—	—	O-Ring, Inlet Adapter - 70D	3
105	45562	SS	45562	SS	—	—	—	—	Adapter, Inlet	3
106	44098	NBR	44098	NBR	44113	NBR	44113	NBR	Seal, LPS w/SS-Spg	3
	44827	FPM	44827	FPM	44740	FPM	44740	FPM	Seal, LPS w/SS-Spg	3
	48244	EPDM	48244	EPDM	46955	EPDM	46955	EPDM	Seal, LPS w/SS-Spg	3
107	44101	SS	44101	SS	45381	SS	45381	SS	Washer, Lo-Pressure Seal	3
• 110	701286	SSL	—	SSL	701286	SSL	—	SSL	Manifold, Inlet, Block-Style	1
	—	—	701408	SSL	—	—	701408	SSL	Manifold, Inlet, Block-Style, Flushed	1
111	701116	SS	701116	SS	701116	SS	701116	SS	Plug, Inlet (1-1/2" NPT)	1
112	701794	NBR	701794	NBR	701794	NBR	701794	NBR	O-Ring, Inlet Spacer	6
	701318	FPM	701318	FPM	701318	FPM	701318	FPM	O-Ring, Inlet Spacer	6
	701495	EPDM	701495	EPDM	701495	EPDM	701495	EPDM	O-Ring, Inlet Spacer	6
113	701319	PTFE	701319	PTFE	701319	PTFE	701319	PTFE	Back-up-Ring, Inlet Spacer	6
114	701317	SS	701317	SS	701317	SS	701317	SS	Adapter, Spacer, Inlet	3
117	701252	SS	701252	SS	701252	SS	701252	SS	Screw, HSH (M14x100)	4
123	12391	NBR	12391	NBR	—	—	—	—	O-Ring, V-Packing Cylinder - 70D	3
	13266	FPM	13266	FPM	—	—	—	—	O-Ring, V-Packing Cylinder - 70D	3
	701748	EPDM	701748	EPDM	—	—	—	—	O-Ring, V-Packing Cylinder	3
124	45563	SSL	45563	SSL	—	—	—	—	Cylinder, V-Packing	3
126	48390	D	48390	D	48391	D	48391	D	Adapter, Female	3
	45564	SS	45564	SS	45367	SS	45367	SS	Adapter, Female	3
127	44608	STG	44608	STG	44609	STG	44609	STG	V-Packing	6
	44829	FPM	44829	FPM	44741	FPM	44741	FPM	V-Packing	6
	44608	EPDM	44608	EPDM	44609	EPDM	44609	EPDM	V-Packing (Alternate)	6
128	45565	SS	45565	SS	45368	SS	45368	SS	Adapter, Male	3
141	45113	SS	45113	SS	45113	SS	45113	SS	Springs, Coil	6/18
142	45566	SS	45566	SS	45382	SS	45382	SS	Spacer w/Coil Springs	3
155	18697	NBR	18697	NBR	18697	NBR	18697	NBR	O-Ring, V-Packing Spacer - 70D	3
	20137	FPM	20137	FPM	20137	FPM	20137	FPM	O-Ring, V-Packing Spacer - 70D	3
	701449	EPDM	701449	EPDM	701449	EPDM	701449	EPDM	O-Ring, V-Packing Spacer, Inner	3
156	48362	D	48362	D	48362	D	48362	D	Back-up-Ring, V-Packing Spacer	3
157	45674	SS	45674	SS	45369	SS	45369	SS	Spacer, V-Packing	3
158	48371	D	48371	D	48362	D	48362	D	Back-up-Ring, Spacer	3
159	25495	NBR	25495	NBR	18697	NBR	18697	NBR	O-Ring, V-Packing Spacer - 70D	3
	11748	FPM	11748	FPM	20137	FPM	20137	FPM	O-Ring, V-Packing Spacer - 70D	3
	701492	EPDM	701492	EPDM	701491	EPDM	701491	EPDM	O-Ring, V-Packing Spacer, Outer	3
162	48363	D	48363	D	48363	D	48363	D	Back-up-Ring, Seat	6
163	26142	NBR	26142	NBR	26142	NBR	26142	NBR	O-Ring, Seat - 80D	6
	14330	FPM	14330	FPM	14330	FPM	14330	FPM	O-Ring, Seat - 70D	6
	701493	EPDM	701493	EPDM	701493	EPDM	701493	EPDM	O-Ring, Seat	6
164	44612	SS	44612	SS	44612	SS	44612	SS	Seat, Stepped	6
166	44108	SS	44108	SS	44108	SS	44108	SS	Valve	6
167	44109	SS	44109	SS	44109	SS	44109	SS	Spring	6
168	44728	PVDF	44728	PVDF	44728	PVDF	44728	PVDF	Retainer, Spring	6
170	44729	SS	44729	SS	44729	SS	44729	SS	Washer, Spring Retainer	6
171	44644	SS	44644	SS	44644	SS	44644	SS	Spring, Coil (70kg), Valve Plug	6

Replace as a set

EXPLODED VIEW



Models
Standard - 3821, 3831
Flushed - 3821K, 3831K
October 1999

Part No.	3821	MATL	3821K	MATL	3831	MATL	3831K	MATL	Description	Qty
172	89827	NBR	89827	NBR	89827	NBR	89827	NBR	O-Ring, Valve Plug - 90D	6
	11747	FPM	11747	FPM	11747	FPM	11747	FPM	O-Ring, Valve Plug	6
	♦ 701494	EPDM	♦ 701494	EPDM	♦ 701494	EPDM	♦ 701494	EPDM	O-Ring, Valve Plug	6
173	48364	D	48364	D	48364	D	48364	D	Back-up-Ring, Valve Plug	6
174	701278	SS	701278	SS	701278	SS	701278	SS	Plug, Valve	6
176	701316	SS	701316	SS	701316	SS	701316	SS	Cover, Valve	2
177	87951	S	87951	S	87951	S	87951	S	Screw, HSH (M10x30)	32
185	701315	SSL	701315	SSL	701315	SSL	701315	SSL	Manifold, Discharge, Block-Style	1
188	701279	S	701279	S	701279	S	701279	S	Screw, HSH (M12x100)	12
250	44516	NY	44516	NY	44516	NY	44516	NY	Protector, Shaft w/2 89283 screws	1
	701140	F	701140	F	701140	F	701140	F	Protector, Shaft (Use w/701137, 38, 39, 45, 47)	1
255	34039	SS	34039	SS	34039	SS	34039	SS	Kit, Stud Mount	1
260	92674	STZP	92674	STZP	92674	STZP	92674	STZP	Mount, Rail, Assy (Incls: 43888, 34018)	1
275	990013	STL	990013	STL	990013	STL	990013	STL	Hub, "B" (Keyway M10x8x70) [See Drive Packages Tech 03]	1
279	30278	STZP	—	—	30278	STZP	—	—	Oiler (1 oz.)	3
281	30967	—	—	—	30967	—	—	—	Glass, Oiler	3
282	10069	—	—	—	10069	—	—	—	Gasket, Oiler	3
283	34334	—	34334	—	34334	—	34334	—	Kit, Oil Drain	1
290	6104	—	6104	—	6104	—	6104	—	Gasket, Liquid (1 oz.)	1
299	901401	SSL	—	—	901400	SSL	—	—	Head, Complete, Block-Style	1
	—	—	901405	SSL	—	—	901404	SSL	Head, Complete, Block-Style, Flushed	1
300	701699	NBR	701699	NBR	701698	NBR	701698	NBR	Kit, Seal (Incls: 97, 106, 112, 113, 127, 155, 156, 158, 159)	1
	33269	FPM	33269	FPM	33268	FPM	33268	FPM	Kit, Seal (Incls: 97, 106, 112, 113, 127, 155, 156, 158, 159)	1
	♦ 701714	EPDM	♦ 701714	EPDM	♦ 701797	EPDM	♦ 701797	EPDM	Kit, Seal (Incls: 97, 106, 112, 113, 127, 155, 156, 158, 159)	1
310	34017	NBR	34017	NBR	34017	NBR	34017	NBR	Kit, Valve (Incls: 162, 163, 164, 166, 167, 168, 170, 172, 173)	2
	31255	FPM	31255	FPM	31255	FPM	31255	FPM	Kit, Valve (Incls: 162, 163, 164, 166, 167, 168, 170, 172, 173)	2
	♦ 31252	EPDM	♦ 31252	EPDM	♦ 31252	EPDM	♦ 31252	EPDM	Kit, Valve (Incls: 162, 163, 164, 166, 167, 168, 170, 172, 173)	2
	819000	F	819000	F	819000	F	819000	F	Crankcase Assembly, CAST IRON Conversion	1
370	—	—	990663	—	—	—	990663	—	Assembly, Flushing, 5 gal., 115V, 1.1 Amp, 1/2"NPT	1
	714500	SS	714500	SS	714500	SS	714500	SS	C.A.T. (For R.O. or Industrial Applications)	1
	711506	SS	711506	SS	711506	SS	711506	SS	Adapter (2 per C.A.T.) [See Data Sheet for complete selection]	2
	6565.7	—	6565.7	—	6565.7	—	6565.7	—	Plunger Pump Service Video	1

● Industrial discount. **Bold print part numbers are unique to a particular pump model.** *Italics are optional items.* ♦ Silicon oil/grease required.

Pressurized Inlet and C.A.T. highly recommended for Hi-Temp, R.O. and industrial applications. See Tech Bulletins 03, 24, 36, 53, 74 and 77 for additional information.

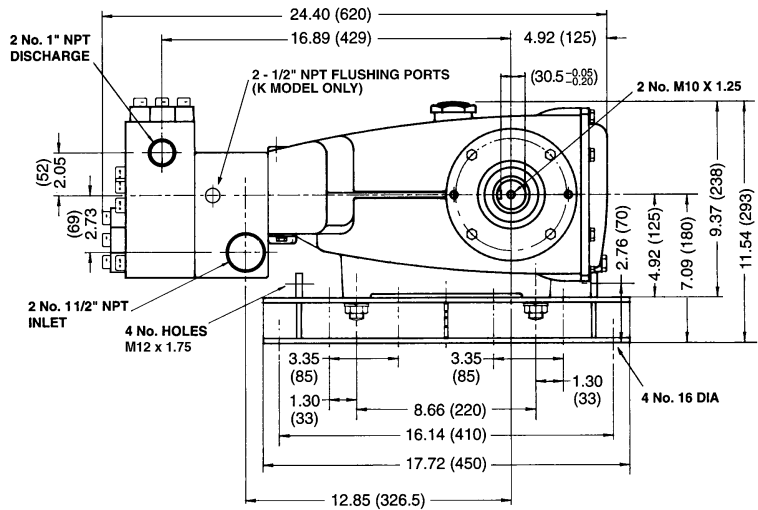
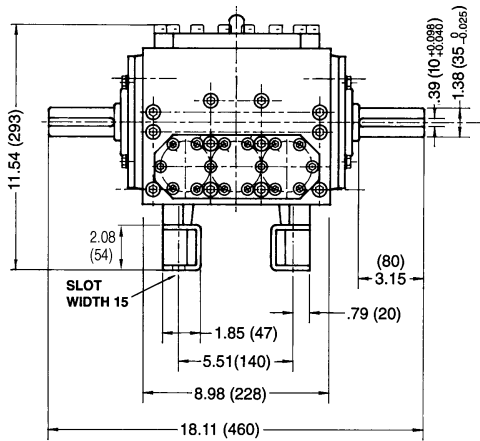
MATERIAL CODES (Not Part of Part Number): ABS=ABS Plastic AL=Aluminum BCCP=Brass/Chrome Plated CC=Ceramic D=Delryn EPDM=Ethylene Propylene Diene Monomer

F=Cast Iron FBR=Fiber FCM=Forged Chrome-moly FPM=Fluorocarbon (Viton®) HT=Hi-Temp (EPDM Alternative) NBR=Medium Nitrile (Buna-N) NY=Nylon

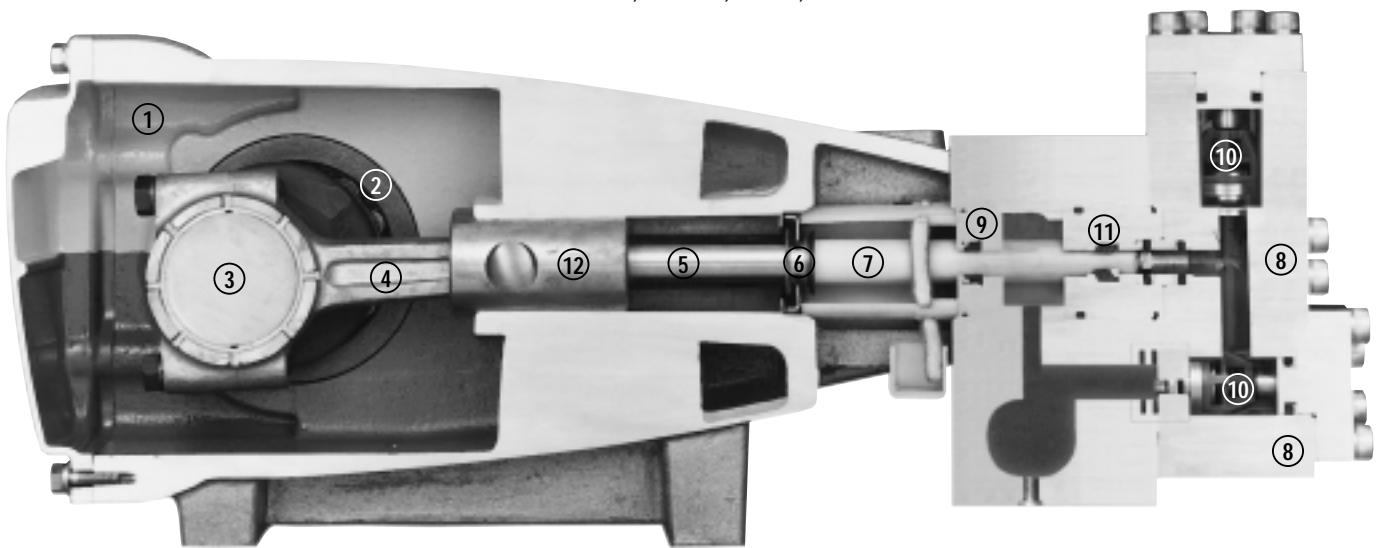
PE=Polyethylene PTFE=Polytetrafluoroethylene (Teflon®) PVDF=Fluoroplastic (High Strength) S=304SS SNG=Special Blend (Buna) SS=316SS SSL=316SS/Low Carbon SSZZ=316SS/Zamak

STCP=Steel/Chrome Plated STG=Special Blend (Teflon®) White STL=Steel STZP=Steel/Zinc Plated

ORDER CODES: Add to Model Number .0110 for FPM (Viton®), .0220 for EPDM. Consult factory for pricing.



Models 3821, 3821K, 3831, 3831K



- 1 Die cast aluminum **crankcase** means high strength, lightweight, and excellent tolerance control.
- 2 Oversized crankshaft **bearings** provide extended bearing life and pump performance.
- 3 Chrome-moly **crankshaft** provides unmatched strength and surface hardness for long life.
- 4 Matched oversized high strength **connecting rods** are noted for superior strength and bearing quality.
- 5 Special stainless steel **plunger rods** with high strength crossheads for longevity and corrosion resistance.
- 6 The stainless steel **slinger** provides back-up protection for the crankcase seal, keeping pumped liquids out of the crankcase.
- 7 Special concentric, high density, polished, graphite impregnated, solid ceramic **plungers** are abrasion resistant and result in extended seal life.
- 8 **Manifolds** are 316 block-style for long-term, continuous-duty and corrosion resistance.
- 9 **Standard Models:** Lo-Pressure Seals and V-Packings are completely lubricated and cooled by the liquid being pumped.
- 9 **Flushed Models:** Special ported inlet manifold permits liquid to cool or flush between V-Packings and Lo-Pressure Seals providing protection against high temperatures or contaminating pumped liquids.
- 10 Stainless steel **valves, seats and springs** provide corrosion-resistance, positive seating and long life.
- 11 Specially formulated, CAT PUMP exclusive, **V-Packings** offer unmatched performance and seal life.
- 12 **Crossheads** are 360° supported for uncompromising alignment.

Products described hereon are covered by one or more of the following U.S. patents 3558244, 3652188, 3809508, 3920356, 3930756 and 5035580

Oct 1999 9925

World Headquarters

CAT PUMPS

1681 - 94th Lane N.E. Minneapolis, MN 55449-4324

Phone (612) 780-5440 — FAX (612) 780-2958

e-mail: sales@catpumps.com

www.catpumps.com

International Inquiries

FAX (612) 785-4329

e-mail: intlsales@catpumps.com



"The World's Longest Lasting Pumps"

CAT PUMPS (U.K.) LTD.

1 Fleet Business Park, Sandy Lane, Church Crookham, Fleet

Hampshire GU13 0BF, England

Phone Fleet 44 1252-622031 — Fax 44 1252-626655

N.V. CAT PUMPS INTERNATIONAL S.A.

Heiveldkens 6A, 2550 Kontich, Belgium

Phone 32-3-450.71.50 — Fax 32-3-450.71.51

e-mail: cpi@catpumps.be www.catpumps.be

CAT PUMPS DEUTSCHLAND GmbH

Buchwiese 2, D-65510 Idstein, Germany

Phone 49 6126-93030 — Fax 49 6126-930333

e-mail: catpumps@t-online.de www.catpumps.de