



7 Frame Plunger Pump

Standard Models

53, 55

Gearbox Models

58, 51

FEATURES

Superior Design

- Triplex plunger design gives smoother fluid flow.
- High pressure seals are completely lubricated and cooled by the fluid being pumped.
- Inlet and discharge valve assemblies interchange for easier maintenance.
- Lubricated low pressure seal provides double protection against external leakage.
- Oil bath crankcase assures optimum lubrication.
- Close tolerance concentricity of the ceramic plunger maximizes seal life.
- Convenient Gearbox Pump version for direct mounting to gas engine.

Quality Materials

- All stainless steel valves are heat treated and seats are roller burnished for a positive seal and extended valve life.
- Forged brass manifold for strength and corrosion resistance.
- Special concentric, high density, polished, graphite impregnated, solid ceramic plungers are abrasion resistant and result in extended seal life.
- Specially formulated, CAT PUMP exclusive, Hi-Pressure Seals offer unmatched performance and seal life.
- Die cast aluminum crankcase provides high strength, minimum weight and precision tolerance control.
- Chrome-moly crankshaft gives unmatched strength and surface hardness.
- Oversized crankshaft bearings with greater loading capacity mean longer bearing life.

Easy Maintenance

- Wet end is easily serviced without entering crankcase, requiring less time and effort.
- Valve assemblies are accessible without disturbing piping, for quick service.
- Preset packings mean no packing gland adjustment is necessary, reducing maintenance costs.

DETERMINING THE PUMP R.P.M. $\frac{\text{Rated G.P.M.}}{\text{Rated R.P.M.}} = \frac{\text{"Desired" G.P.M.}}{\text{"Desired" R.P.M.}}$

DETERMINING THE REQUIRED H.P. $\frac{\text{GPM} \times \text{PSI}}{1460} = \frac{\text{Electric Brake H. P. Required}}{\text{H. P. Required}}$

DETERMINING MOTOR PULLEY SIZE $\frac{\text{Motor Pulley O.D.}}{\text{Pump R.P.M.}} = \frac{\text{Pump Pulley O.D.}}{\text{Motor R.P.M.}}$

Note: Consult engine manufacturer when using gas or diesel engine. Refer to pump Service Manual for important Inlet Condition Check-List, Start-up Procedure, Tech Bulletins and Pump Maintenance information.

SPECIFICATIONS

	U.S. Measure	Metric Measure
MODEL 53 Standard		
Flow	5.0 GPM	(19 L/M)
Discharge Pressure	100 to 2500 PSI	(7 to 175 BAR)
Inlet Pressure	-5 to 60 PSI	(0.35 to 4 BAR)
RPM	1100 RPM	(1100 RPM)
Bore	0.708"	(18 mm)
Stroke	0.945"	(24 mm)

MODEL 55 Standard		
Flow	5.0 GPM	(19 L/M)
Discharge Pressure	100 to 3000 PSI	(7 to 210 BAR)
Inlet Pressure	-5 to 60 PSI	(0.35 to 4 BAR)
RPM	1415 RPM	(1415 RPM)
Bore	0.630"	(16 mm)
Stroke	0.945"	(24 mm)

MODEL 58 — Gearbox 58G1 or 58G118		
Flow	5.0 GPM	(19 L/M)
Discharge Pressure	100 to 2500 PSI	(7 to 175 BAR)
Inlet Pressure	Flooded to 60 PSI	(Flooded to 4 BAR)
RPM	1570 RPM	(1570 RPM)
Bore	0.708"	(18 mm)
Stroke	0.669"	(17 mm)

MODEL 51 — Gearbox 51G1 or 51G118		
Flow	4.8 GPM	(18 L/M)
Discharge Pressure	100 to 3000 PSI	(7 to 210 BAR)
Inlet Pressure	Flooded to 60 PSI	(Flooded to 4 BAR)
RPM	1765 RPM	(1765 RPM)
Bore	0.630"	(16 mm)
Stroke	0.728"	(18.5 mm)

COMMON SPECIFICATIONS

Crankcase Capacity	25 oz.	(0.75 L)
Maximum Fluid Temperature	160°F	(71°C)
Inlet Ports (2)	1/2" NPT	(1/2" NPT)
Outlet Ports (2)	3/8" NPT	(3/8" NPT)
Shaft Diameter	0.945"	(24 mm)
Weight	25.5 lbs.	(11.5 kg)
Dimensions	13.6 x 8.23 x 5.87"	(346 x 209 x 149 mm)

HORSEPOWER REQUIREMENTS

MODEL	FLOW		PRESSURE				MOTOR PULLEY SIZE	
	U.S. GPM	L/M	PSI 1800	PSI 2000	PSI 2500	PSI 3000	RPM	Pulley O.D.
53	5.0	19	6.2	6.9	8.6	N/A	1100	6.3
	4.5	17	5.6	6.2	7.7	N/A	990	5.6
	4.0	15	5.0	5.5	6.9	N/A	880	5.0
55	5.0	19	6.2	6.9	8.6	10.3	1415	8.0
	4.0	15	5.0	5.5	6.9	8.3	1130	6.4
	3.0	11	3.7	4.2	5.2	6.2	850	5.0
58	5.0	19	6.2	6.9	8.6	N/A	1570	Gearbox
51	4.8	18	5.9	6.6	8.2	9.8	1765	Gearbox

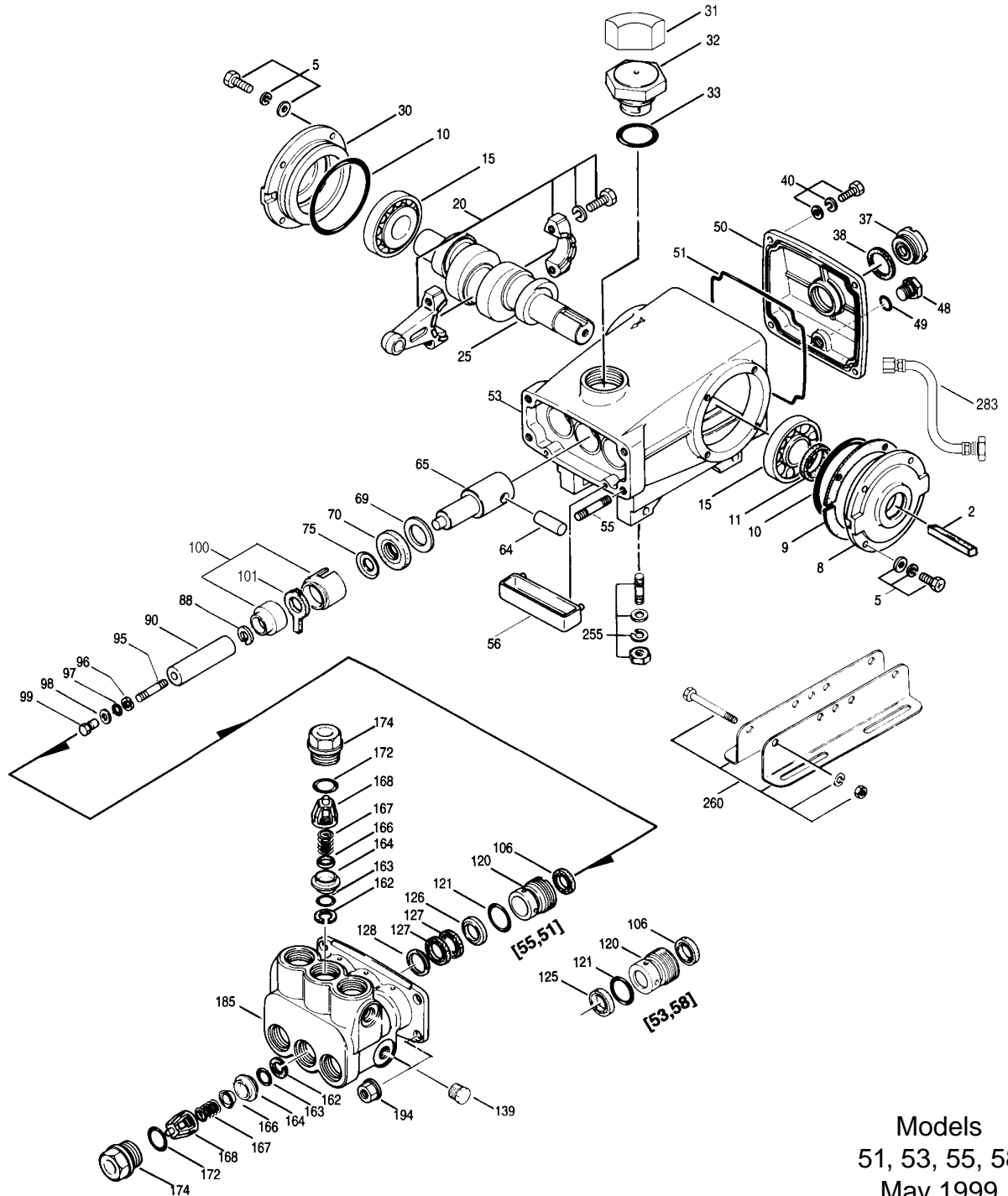
See complete Drive Packages [Incls: Pulleys, Belts, Hubs, Key] Tech Bulletin 03.

"Customer confidence is our greatest asset"

PARTS LIST

ITEM	PART NUMBER				DESCRIPTION	QTY
	51 MATL	55 MATL	53 MATL	58 MATL		
● 2	30067 STL	30067 STL	30067 STL	30067 STL	Key (M8x7.5x25)	1 ●
5	92519 STZP	92519 STZP	92519 STZP	92519 STZP	Screw, Sems HHC (M6x16)	8
8	43466 AL	43466 AL	43466 AL	43466 AL	Cover, Bearing	1
9	43261	43261	43261	43261	Shim, Bearing Case	1
10	12393 NBR	12393 NBR	12393 NBR	12393 NBR	O-Ring, Cover	2
11	43222 NBR	43222 NBR	43222 NBR	43222 NBR	Seal, Oil, Crankshaft	1
15	43221 STL	43221 STL	43221 STL	43221 STL	Bearing	2
20	46302 HS	46302 HS	46302 HS	46302 HS	Rod, Connecting Assy	3
25	44947 FCM	44233 FCM	44233 FCM	44946 FCM	Crankshaft - Single End	1
30	44967 AL	44967 AL	44967 AL	44967 AL	Cover, Bearing, Blind	1
31	828710	828710	828710	828710	Protector, Oil Cap	1
32	44666 RTP	43211 RTP	43211 RTP	44666 RTP	Cap, Oil Filler, Domed	1
33	14177 NBR	14177 NBR	14177 NBR	14177 NBR	O-Ring, Filler Cap	1
37	43987	43987	43987	43987	Gauge, Oil, Bubble	1
38	44428 NBR	44428 NBR	44428 NBR	44428 NBR	Gasket, Flat	1
40	92520 STZP	92520 STZP	92520 STZP	92520 STZP	Screw, Sems HHC (M6x20)	4
48	25625 STCP	25625 STCP	25625 STCP	25625 STCP	Plug, Drain	1
49	23170 NBR	23170 NBR	23170 NBR	23170 NBR	O-Ring, Drain Plug	1
50	46509 AL	46509 AL	46509 AL	46509 AL	Cover, Rear	1
51	44836 NBR	44836 NBR	44836 NBR	44836 NBR	O-Ring, Rear Cover	1
● 53	44555 AL	44555 AL	44555 AL	44555 AL	Crankcase (M10)	1 ●
55	46868 S	46868 S	46868 S	46868 S	Stud, Manifold (M10x35)	4
56	43240 POP	43240 POP	43240 POP	43240 POP	Pan, Oil	1
64	43237 S	43237 S	43237 S	43237 S	Pin, Rist	3
65	44234 CPZZ	44234 CPZZ	44234 CPZZ	44234 CPZZ	Rod, Plunger .	3
69	43227 STZP	43227 STZP	43227 STZP	43227 STZP	Washer, Oil Seal	3
70	43228 NBR	43228 NBR	43228 NBR	43228 NBR	Seal, Oil, Crankcase	3
75	43328 S	43328 S	43328 S	43328 S	Slinger, Barrier	3
88	45697 S	45697 S	45697 S	45697 S	Washer, Keyhole (M18)	3
90	43311 CC	43311 CC	43232 CC	43232 CC	Plunger	3
95	89649 ZP	89649 ZP	89649 ZP	89649 ZP	Stud, Plunger Retainer (M6x70)	3
96	43235 PTFE	43235 PTFE	43235 PTFE	43235 PTFE	Back-up-Ring, Plunger Retainer	3
97	17399 NBR	17399 NBR	17399 NBR	17399 NBR	O-Ring, Plunger Retainer	3
	14160 FPM	14160 FPM	14160 FPM	14160 FPM	O-Ring, Plunger Retainer	3
98	45891 CU	45891 CU	45891 CU	45891 CU	Gasket, Plunger Retainer	3
99	46504 S	46504 S	46504 S	46504 S	Retainer, Plunger (M5)	3
100	45687 PVDF	45687 PVDF	45687 PVDF	45687 PVDF	Retainer, Seal Adapter, Front	3
	45686 PVDF	45686 PVDF	45686 PVDF	45686 PVDF	Retainer, Rear	3
101	43313	43313	43239	43239	Wick, Long Tab	3
106	43316 NBR	43316 NBR	43243 NBR	43243 BTS	Seal, LPS w/S-Spg	3
	106660 FPM	106660 FPM	44926 FPM	44926 FPM	Seal, LPS w/S-Spg	3
120	45684 BB	45684 BB	45683 BB	45683 BB	Case, Seal	3
121	20285 NBR	20285 NBR	20285 NBR	20285 NBR	O-Ring, Seal Case	3
	11693 FPM	11693 FPM	11693 FPM	11693 FPM	O-Ring, Seal Case	3
125	—	—	43245 SNG	43245 SNG	Seal, HPS w/S	3
	—	—	44925 FPM	44925 FPM	Seal, HPS w/S	3
126	43320 BB	43320 BB	—	—	Adapter, Female	3
127	43319 PTFE	43319 PTFE	—	—	V-Packing	6
	46287 FPM	46287 FPM	—	—	V-Packing, ALTERNATE , White	6
128	43318 BB	43318 BB	—	—	Adapter, Male	3
139	43448 BB	43448 BB	43448 BB	43448 BB	Plug, Inlet	1
162	43248 PTFE	43248 PTFE	43248 PTFE	43248 PTFE	Back-up-Ring, Valve Seat	6
163	43249 NBR	43249 NBR	43249 NBR	43249 NBR	O-Ring, Valve Seat	6
	44383 FPM	44383 FPM	44383 FPM	44383 FPM	O-Ring, Valve Seat	6
164	43722 S	43722 S	43722 S	43722 S	Seat, Valve - Q.V.	6
	43825 S	—	43825 S	43825 S	Seat, Valve - F.V.	6
166	43721 S	43721 S	43721 S	43721 S	Valve - Q.V.	6
	43824 S	—	43824 S	43824 S	Valve - F.V.	6
167	43751 S	43751 S	43751 S	43751 S	Spring - Q.V.	6
	43823 S	—	43823 S	43823 S	Spring - F.V.	6
168	44564 PVDF	44564 PVDF	44564 PVDF	44564 PVDF	Retainer, Valve Spring	6
172	17617 NBR	17617 NBR	17617 NBR	17617 NBR	O-Ring, Valve Plug	6
	11691 FPM	11691 FPM	11691 FPM	11691 FPM	O-Ring, Valve Plug	6
174	43850 BB	43850 BB	43850 BB	43850 BB	Plug, Valve	6
185	45549 BB	45549 BB	45419 FBB	45419 FBB	Head, Manifold	1
194	45550 STZP	45550 STZP	45550 STZP	45550 STZP	Nut, Flanged (M10)	4
255	30243 STZP	30243 STZP	30243 STZP	30243 STZP	Kit, Direct Mount	1
260	30611 STZP	30611 STZP	30611 STZP	30611 STZP	Assy, Angle Rail, B, U.S. (28499,30900,30910,30920)	1
260	—	30645 STZP	30645 STZP	—	Assy, Angle Rail, A, U.S.(30635,30900,30910,30920)	1
265	30660	30660	30660	30660	Kit, Mounting (30611,30206,33000,30067,43256)	1
● 269	30206	30206	30206	30206	Pulley (10")	1 ●
● 274	33000 STL	33000 STL	33000 STL	33000 STL	Hub (M24) [See complete Drive Packages Tech Bulletin 03]	1 ●

EXPLODED VIEW



Models
51, 53, 55, 58
May 1999

	51 MATL	55 MATL	53 MATL	58 MATL		
283	34334	34334	34334	34334	Kit, Oil Drain	1
● 299	—	—	814521 BB	814521 BB	Complete Head	1 ●
300	30610 NBR	30610 NBR	30488 NBR	30488 NBR	Kit, Seal (Incls: 97,101,106,121,125,127)	1
310	30820 NBR	30820 NBR	30820 NBR	30820 NBR	Kit, Valve - Q.V. (Incls: 162-164,166,167,168,172)	2
	31820 NBR	31820 NBR	31820 NBR	31820 NBR	Kit, Valve - F.V. (Incls: 162-164,166-168,172)	2
350	30696	30696	30696	30696	Tool, Valve Seat Removal	1
351	43257	43257	43257	43257	Tool, Seal Case Removal	1
	33005	33005	33005	33005	Tool, Seal Case Socket (1/2" Drive)	1
352	44050	44050	44050	44050	Tool, Oil Gauge Removal	1
	6565.1	6565.1	6565.1	6565.1	Plunger Pump Service Video - 5, 7, 15 Fr Pumps	1

● Industrial discount. **Bold print part numbers are unique to a particular pump model.** *Italics are optional items.*

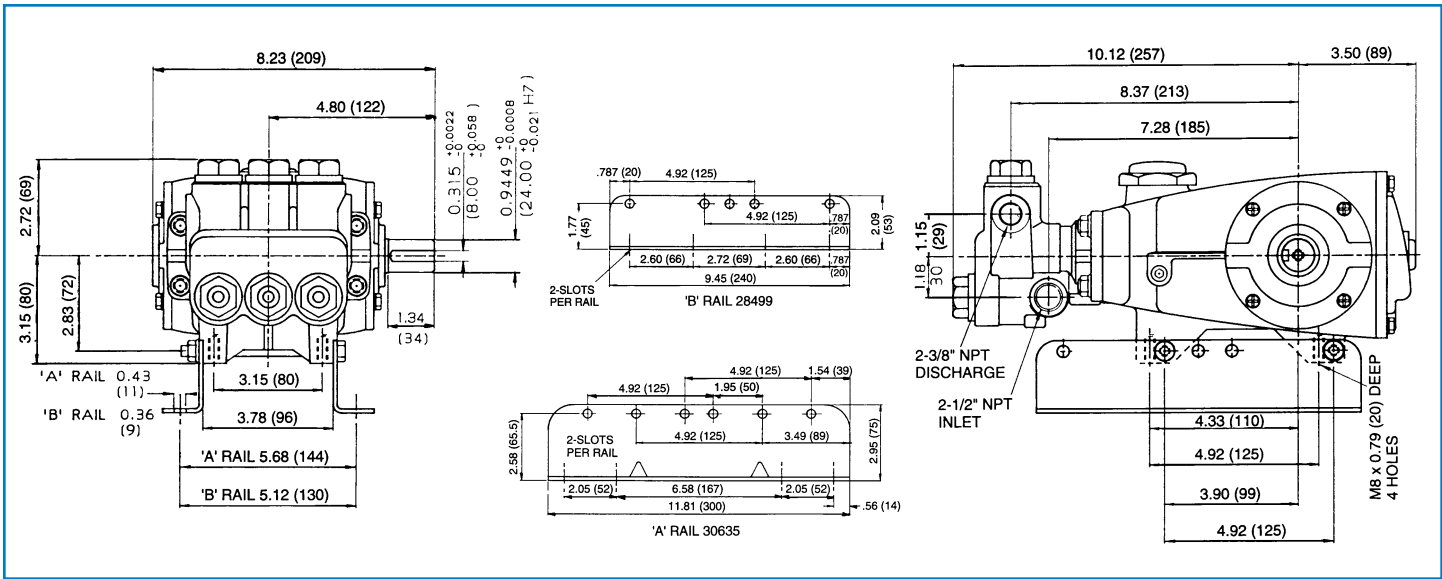
See Tech Bulletins 03, 24, 35, 36, 43, 74 and 77 for additional information. See 8051-8078 Gearbox Specification Sheet for direct drive Gas Engine option.

MATERIAL CODES (Not Part of Part Number): AL=Aluminum BB=Brass CC=Ceramic CPZZ=Chrome Plated/Steel CU=Copper FBB=Forged Brass

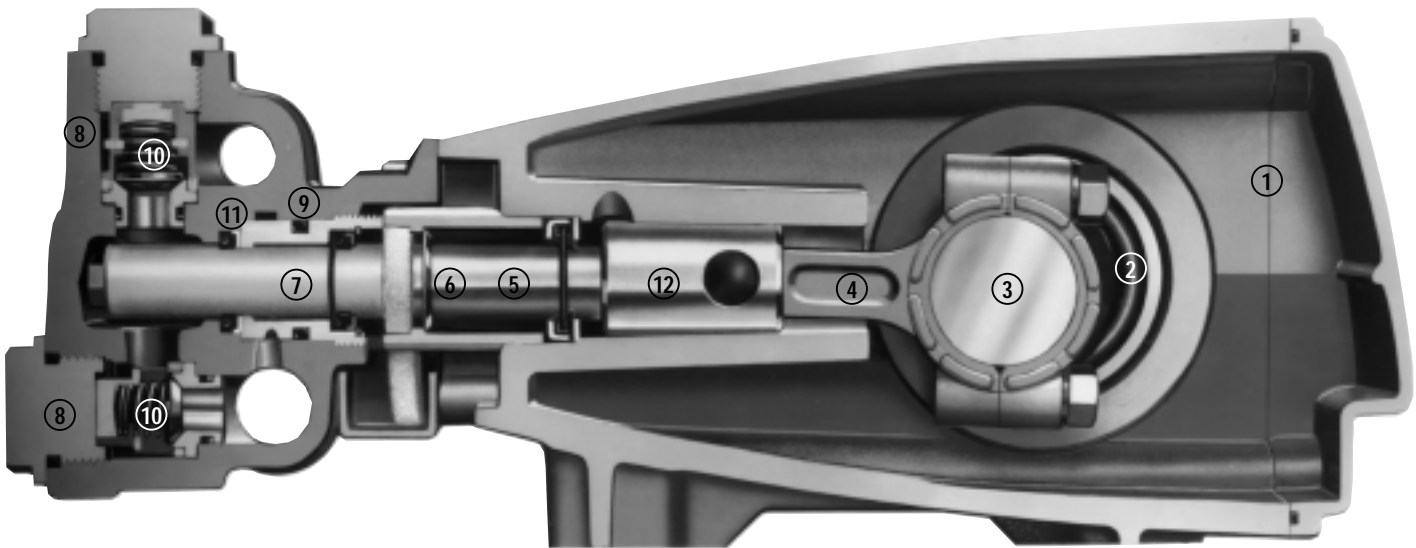
FCM=Forged Chrome-moly FPM=Fluorocarbon (Viton®) HS=High Strength HT=Hi-Temp (EPDM Alternative) NBR=Medium Nitrile (Buna-N)

POP=Polypropylene PTFE=Polytetrafluoroethylene (Teflon®) PVDF=Fluoroplastic (High Strength) RTP=Reinforced Composite S=304SS

SNG=Special Blend (Buna) STCP=Steel/Chrome Plated STL=Steel STZP=Steel/Zinc Plated ZP=Zinc Plated



Models 53, 55, 58, 51



- 1 Die cast aluminum **crankcase** means high strength, lightweight, and excellent tolerance control.
- 2 Oversized crankshaft **bearings** provide extended bearing life and pump performance.
- 3 Chrome-moly **crankshaft** provides unmatched strength and surface hardness for long life.
- 4 Matched oversized high strength **connecting rods** for superior strength and bearing quality.
- 5 The **plunger rods** are high tensile strength stainless steel with Zamak crossheads.
- 6 The stainless steel **slinger** provides back-up protection for the crankcase seal, keeping pumped fluids out of the crankcase.
- 7 Special concentric, high density, polished, graphite impregnated, solid ceramic **plungers** are abrasion resistant and result in extended seal life.
- 8 **Manifolds** are a high tensile strength forged brass for long term, continuous duty.
- 9 100% wet **seal** design adds to service life by allowing pumped fluids to cool and lubricate on both sides.
- 10 Stainless steel **valves, seats and springs** provide corrosion-resistance, positive seating and long life.
- 11 Specially formulated, CAT PUMP exclusive, **V-Packings** offer unmatched performance and seal life.
- 12 **Crossheads** are 360° supported for uncompromising alignment.

Products described hereon are covered by one or more of the following U.S. patents 3558244, 3652188, 3809508, 3920356, 3930756 and 5035580

May 1999 4933

World Headquarters

CAT PUMPS

1681 - 94th Lane N.E. Minneapolis, MN 55449-4324

Phone (612) 780-5440 — FAX (612) 780-2958

e-mail: sales@catpumps.com

www.catpumps.com

International Inquiries

FAX (612) 785-4329

e-mail: intlsales@catpumps.com



The Pump with "Nine Lives"

CAT PUMPS (U.K.) LTD.

1 Fleet Business Park, Sandy Lane, Church Crookham, Fleet

Hampshire GU13 0BF, England

Phone Fleet 44 1252-622031 — Fax 44 1252-626655

N.V. CAT PUMPS INTERNATIONAL S.A.

Heiveldkens 6A, 2550 Kontich, Belgium

Phone 32-3-450.71.50 — Fax 32-3-450.71.51

e-mail: cpi@catpumps.be

CAT PUMPS DEUTSCHLAND GmbH

Buchwiese 2, D-65510 Idstein, Germany

Phone 49 6126-93030 — Fax 49 6126-930333

e-mail: catpumps@t-online.de www.catpumps.de