

## Briggs & Stratton Engines - Gasoline



VANGUARD,  
V-TWIN OHV

Briggs & Stratton's top-of-the-line engines have proven performance in the pressure washer industry.

- Easy, quick starting
- Large fuel tank
- Super quiet muffler
- OilGuard® low-oil shutdown



New Part No.	Part No.	HP	Shaft Diameter	Starter	Charge Rate	Fuel Tank	Model No.
9.802-325.0	5-0309	16	1"	Electric	20 Amp	N/A	Vanguard
8.715-067.0	5-0316	21	1"	Electric	N/A	N/A	Vanguard

NOTE: Mufflers for the above engine are sold separately. See Briggs & Stratton Engine Parts section below.



OHV VANGUARD

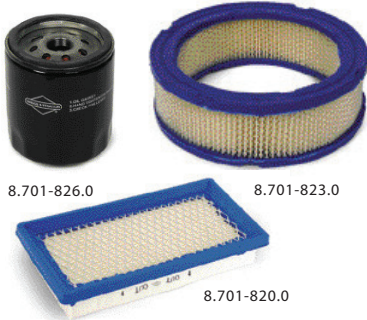
Power to complete any job quicker and easier with less wear and tear on major engine components.

- State-of-the-art carburetion system
- 30% quieter muffler than competition
- Cast/sintered iron sleeve
- OilGuard® low-oil shutdown



New Part No.	Part No.	HP	Shaft Diameter	Starter	Charge Rate	Fuel Tank	Model No.
8.709-877.0	5-0313	11	1"	Recoil	N/A	2 gal	Vanguard
8.709-879.0	5-0314	13	1"	Recoil	N/A	2 gal	Vanguard
8.709-896.0	339405	5.5		One Pull Starting			Intek-Pro

## Briggs & Stratton Engine Parts



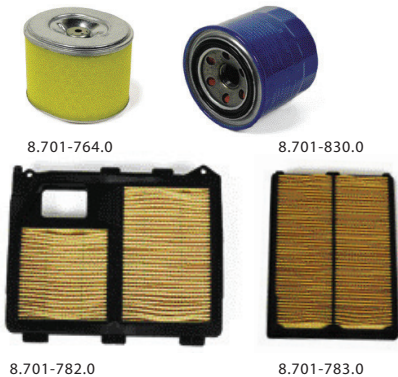
Genuine Briggs & Stratton replacement parts are available. Please provide engine model/type/code to assure proper fit of replacement parts.

- Authorized manufacturer replacement parts
- Don't settle for cheap imitations



Part No.	Original No.	Description
8.701-826.0	091960	Briggs 16/18 HP Vanguard, Oil Filter
8.701-820.0	091950	Briggs 5 HP Industrial, Air Filter
8.701-821.0	091952	Briggs 8 or 11 HP IC, Air Filter
8.701-823.0	091954	Briggs 16/18 HP Vanguard, Air Filter

## Honda Engine Parts



Original Honda replacement parts from the factory. Filters are a great add-on to every service order.

- Authorized manufacturer replacement parts
- Don't settle for cheap imitations



Part No.	Original No.	Description
8.701-830.0	091970	Honda 18/20 HP, Oil Filter
8.701-764.0	091746	Honda GX160, Air Filter
8.701-780.0	091775	Honda GX240/270, Air Filter
8.701-781.0	091777	Honda GX340, Air Filter
8.701-782.0	091779	Honda GX610/620, Air Filter (old style)
8.701-783.0	091779A	Honda GX610/620, Air Filter (new style)

## 12 VDC Starter Solenoid

Universal type used on many lawn and garden tractors and mowers.



- Double terminal – 5/16" - 24 studs
- Same as used on 16 HP B & S Vanguard engines
- Rated for intermittent duty (i.e. for starting small gasoline engines)

Part No.	Original No.	Description
8.701-691.0	091357	12V DC Starter

## Keyed Ignition Switch - 12 VDC



- Universal style/5 pole
- Off-On-Start (spring back to On)
- Panel nut and star-lock washer
- Two keys included
- Has two auxiliary circuits
- Universal - used for small engine controls on many lawn and garden tractors, mowers

Part No.	Original No.	Description
8.701-689.0	091350	Keyed Ignition Switch, 5 pole
8.701-690.0	091351	Keyed Ignition Switch, 6 pole

# MOTORS

## Small Engine Test Equipment

### Spark Tester



- Handy tool allows safe, easy visual inspection of ignition output
- Connects BETWEEN plug & plug wire
- Totally contained spark
- Engine will run with tester attached
- Neon test light verifies proper ignition

Part No.	Orig. No.	Description
8.701-680.0	091126	Spark Tester

### Compression Tester



- Designed for small engines
- 2-1/2" dial reads up to 300 PSI
- 12" flexible hose to reach spark plug holes
- Adapters for 14mm and 18mm spark plug holes
- Built-in pressure holding/ release valves

Part No.	Orig. No.	Description
8.701-682.0	091133	Comp Tester

### Wireless Tachometer



- Terrific service aid for 1-cylinder engines
- Just hold built-in antenna near spark plug
- Excellent for setting GPM on pressure washers; accuracy within 2% of full scale
- Two scales: 0-5000 RPM or 0-15,000 RPM
- Solid state electronics
- Requires 9 volt battery (not included)

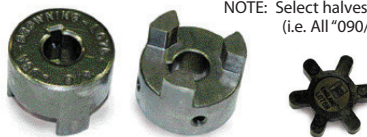
Part No.	Orig. No.	Description
8.701-681.0	091132	Wireless Tach

## Couplers Built by Browning or Lovejoy

Listed as individual coupler sections (half) to allow flexibility in design. For complete coupler select:

Bore size for motor + Bore size for pump + Spider = Complete Coupler

NOTE: Select halves from same series as listed in groups below (i.e. All "090/095", "099/100")



Part No.	Original No.	Description	Bore
<b>090/095 Series: Up to 3 HP Electric or 4 HP Gas</b>			
8.709-620.0	336031	Coupler Half	24mm
8.709-640.0	336050	Coupler Half	5/8" (090)
8.709-634.0	336044	Coupler Half	3/4" (090)
8.709-635.0	336045	Coupler Half	15/16" (090)
8.709-639.0	336049	Buna Spider for 090 (STD)	
<b>099/100 Series: Up to 5-7 1/2 HP Electric or 5-13 HP Gas</b>			
8.709-626.0	336038	Coupler Half	3/4" (100)
8.709-638.0	336048	Coupler Half	15/16" (099)
8.709-625.0	336037	Coupler Half	20mm(100)
8.709-627.0	336039	Coupler Half	24mm (099)
8.709-628.0	336039A	Coupler Half	24mm (100)
8.709-629.0	336040	Coupler Half	1" (100)
8.709-632.0	336042A	Coupler Half	1-1/8" (100)
8.709-637.0	336047	Coupler Half	1-3/8" (100)
8.709-633.0	336043	Buna Spider for 099/100 (STD)	

## Pulleys

Fits Interpump, General and Admiral XLS, XDS Series pumps, plus XD3040, XD3047, XD3055 and XD3065.



- Double groove
- 24mm bore
- 2 x A groove

Part No.	Original No.	OD
8.711-115.0	376304	4.0"
8.711-116.0	376305	5.5"
8.711-117.0	376306	6.3"

## Reference / Calculation Guide

### Conversion Factors

1 inch = 25.4 mm	1 gal H2O = 8.33 lbs	1 gal = 3.79 liter	1 kg = 2.205 lbs
1 cm = 0.394 inch	1 oz = 23.35 gram	1 liter = 0.2642 gal	1 KW = 1.341 HP

### Horsepower (HP) Equations

$$HP = \frac{GPM \times PSI}{1460} \quad PSI = \frac{HP \times 1460}{GPM} \quad GPM = \frac{HP \times 1460}{PSI}$$

### Questions and Answers

Q: How fast do I turn my pump to give me a desired GPM?

A: Required RPM =  $\frac{\text{desired GPM} \times \text{Rated RPM}}{\text{Rated GPM}}$

Q: What size pump pulley do I use to get a certain RPM?

A: Pump Pulley Diameter =  $\frac{\text{Motor Pulley Diameter} \times \text{Motor RPM}}{\text{Pump RPM}}$

## Baldor Motors - C-Face Open Drip Proof (ODP)



Built to "Industrial" Specifications.  
is black.

"S"IndicatesMotorHasOn/OffSwitch."B"Indicatesmotor



Part No.	Orig. No.	Motor HP/S	RPM	Shaft Dia	Bolt Circle	Frame/ C-Face	Full Load Amps	Voltage
<b>Single Phase</b>								
8.709-719.0	337255	3/4	1725	5/8"	5 7/8"	56/56C	10.2/5.4/5.1	115/208/230
8.709-743.0	337302	1.5	1725	5/8"	5-7/8"	56/56C	14/7	115/230
8.709-744.0	337304	1.5	3450	5/8"	5-7/8"	56/56C	13.2/6.6	115/230
8.709-712.0	337232B	1.5S	1725	5/8"	5-7/8"	56/56C	14/7	115/230
8.709-713.0	337234B	1.5S	3450	5/8"	5-7/8"	56/56C	13.2/6.6	115/230
8.709-747.0	337311	2.0	1725	5/8"	5-7/8"	56/56C	18.4/9.2	115/230
8.709-749.0	337313	2.0	3450	5/8"	5-7/8"	56/56C	17.6/8.8	115/230
8.709-714.0	337240B	2.0S	1725	5/8"	5-7/8"	56/56C	18.4/9.2	115/230
8.709-715.0	337242B	2.0S	3450	5/8"	5-7/8"	56/56C	17.6/8.8	115/230
8.709-752.0	337321	3.0	1725	1-1/8"	7-1/4"	184TC	32/16	115/230
8.709-754.0	337323B	3.0	3450	5/8"	5-7/8"	56/56C	13.7/12.5	208/230
8.709-722.0	337263B	3.0S	3450	5/8"	5-7/8"	56/56C	13.7/12.5	208/230
8.709-723.0	337264B	3.0	1725	5/8"	5-7/8"	184CZ/56C	32/16	115/230
8.709-724.0	337265B	3.0S	1725	5/8"	5-7/8"	184CZ/56C	32/16	115/230
8.709-725.0	337266B	3.0S	1725	1-1/8"	7-1/4"	184TC	32/16	115/230
8.709-726.0	337267B	4.0	1725	1-1/8"	7-1/4"	184TC	17.5/16	208/230
8.709-727.0	337268B	4.0	1725	5/8"	5-7/8"	182TCZ/56C	17.5/16	208/230
8.709-728.0	337269B	4.0	3450	5/8"	5-7/8"	56/56C	38/21/19	115/208/230
8.709-730.0	337271B	5.0	1725	1-1/8"	7-1/4"	184TC	25/23	208/230
8.709-731.0	337272B	5.0	3450	5/8"	5-7/8"	56HCY/56C	24/23	208/230
8.709-733.0	337273B	6.0	1725	1-1/8"	7-1/4"	213C/182TC	26	230
8.709-734.0	337275B	7.5	1725	1-1/8"	7-1/4"	215C/182TC	36/33	208/230

### Three Phase Motors

8.751-797.0	337520	3.0	1760	1-1/8"	7-1/4"	182TC	8.4/4.2	230/460
8.751-443.0	337530	5.0	1750	1-1/8"	7-1/4"	184TC	14/13.2/6.6	208/230/460
8.751-798.0	337535	7.5	1770	1-3/8"	7-1/4"	213TC	20.4/19.4/9.7	208/230/460
8.709-825.0	337536	7.5	1725	1-1/8"	7-1/4"	215TCZ/184TC	23/22/11	208/230/460

NOTE: Amp draw ratings require adequate wire size and full voltage to apply. Full load Amp ratings apply only when full rated voltage and properly sized wiring is used to supply power to motor.

## Baldor Motors - Rigid Base Open Drip Proof (ODP)



3 PHASE  
184T FRAME

Part No.	Orig. No.	Motor HP/S	RPM	Shaft Dia	Motor Frame	Full Load Amps	Voltage
<b>Single Phase</b>							
8.709-742.0	337301	1.5	1725	5/8"	56	14/7	115/230
8.709-748.0	337312	2.0	3450	5/8"	56	17/8.8	115/230
8.709-746.0	337310	2.0	1725	5/8"	56	18.4/9.2	115/230
8.709-751.0	337320	3.0	1725	1-1/8"	184T	32/16	115/230
8.709-759.0	337331	5.0	3450	5/8"	56	23-21	208/230
8.709-757.0	337329	5.0	1725	1-1/8"	184T	25/23	208/230
9.802-331.0	337279	7.5	1725	1-3/8"	215T	3-31	208-230
<b>Three Phase Motors</b>							
8.751-013.0	337529	5.0	1750	1-1/8"	184T	14/13.2/6.6	208/230/460
8.751-014.0	337534	7.5	1770	1-3/8"	213T	20.4/19.4/9.7	208/230/460
8.751-015.0	337540	10.0	1770	1-3/8"	215T	25/12.5	230/460
8.751-006.0	337545	15.0	1760	1-5/8"	254T	35.4/17.7	230/460

NOTE: Amp draw ratings require adequate wire size and full voltage to apply. Full load Amp ratings apply only when full rated.

## Baldor Motors - Totally Enclosed Fan Cooled (TEFC)



Featuring heavy gauge steel frames, ball bearings, welded base and "snap-action" starting for reliability. Built to industrial specifications.



Part No.	Original No.	HP	RPM	Shaft Dia	Bolt Circle	Frame/C-Face	Full Load Amps	Voltage
<b>Single Phase</b>								
8.709-766.0	337351	1.5	1725	5/8"	None	56	12/6	115/230
8.709-767.0	337352	1.5	1725	5/8"	5-7/8"	56C	12/6	115/230
8.709-769.0	337354	1.5	3450	5/8"	5 7/8"	56C	13.2/6.6	115/230
8.709-774.0	337363	2.0	3450	5/8"	5-7/8"	56C	17/8.5	115/230
8.709-773.0	337362	2.0	3450	5/8"	None	56	17/8.5	115/230
8.709-772.0	337361	2.0	1725	7/8"	5-7/8"	145TC	8.3	230 only
8.709-776.0	337370	3.0	1725	1-1/8"	None	184T	13.2	230
8.709-778.0	337373	3.0	3450	5/8"	None	56	12.5	230
8.709-779.0	337374	3.0	3450	5/8"	5-7/8"	56C	13.8-12.5	208-230
8.709-783.0	337379	5.0	1725	1-1/8"	None	184T	23	230
8.709-784.0	337380	5.0	1725	1-1/8"	7-1/4"	184TC	23	230
8.709-780.0	337376	5.0	3450	1-1/8"	None	184T	19.5	230
8.709-781.0	337377	5.0	3450	1-1/8"	7-1/4"	184TC	19.5	230
8.709-737.0	337280	7.5	1800	1-1/8"	7-1/4"	215C	34.1-30.8	208-230
8.709-786.0	337384	7.5	3450	1-3/8"	None	213T	30-33	208-230
8.709-793.0	337393	10.0	1725	1-3/8"	None	215T	40	230
<b>Three Phase Motors</b>								
8.751-796.0	337519	3.0	1760	1-1/8"	7-1/4"	182TC	9-8.4/4.2	208-230/460
8.751-319.0	337334	5.0	1750	1-1/8"	None	184T	13.9-13.4/6.7	208-230/460
8.751-318.0	337333	5.0	1750	1-1/8"	7-1/4"	184TC	13.9-13.4/6.7	208-230/460
8.751-799.0	337537	7.5	1770	1-3/8"	None	213T	18.8/9.4	230/460
8.751-793.0	337276	7.5	1770	1-3/8"	7-1/4"	213TC	21-18.8/9.4	208-230/460
8.751-794.0	337385	7.5	3450	1-1/8"	None	184T	18.5-16.8/8.4	208-230/460
8.751-016.0	337544	10.0	1770	1-3/8"	None	215T	25.4-24/12	208-230/460
8.751-795.0	377396	10.0	3490	1-3/8"	None	215T	24.9-23.6/11.8	208-230/460

NOTE: Some of these motors will require two days from order to shipping

## A.O. Smith - Pressure Washer Motors

Excellent power efficiency. "S" indicates Motor has On/Off switch.



Part No.	Orig. No.	Motor HP/S*	RPM	Shaft Dia	Bolt Circle	Frame/C-Face	Full Load Amps	Voltage
8.709-800.0	337413	2.0	3450	5/8"	5-7/8"	56C/56C	17.2/9.2/8.6	115/208/230
8.903-804.0	337414S	2.0	3450	5/8"	5 7/8"	56C/56C	17.2/9.2/8.6	115/208/230
8.903-805.0	337424S	3.0	3450	5/8"	5-7/8"	56C/56C	13.5	208/230
8.709-808.0	337438	6.0	3450	7/8"	5-7/8"	56C/56C	22.0	230
<b>TEFC Motor</b>								
8.709-798.0	337407T	1.5	1750	5/8"	5-7/8"	56C/56C	15.0/7.5	115/230

## Super "Gripnotch" V-Belts



- Full line of belts
- "V" notched for longer life and better performance

Part No.	Original No.	Size
8.715-669.0		AX26
8.710-727.0	369128A	AX28
8.715-672.0		AX29
8.715-673.0	369130A	AX30
9.804-026.0		AX31
9.803-896.0		AX33
9.802-407.0		AX34
9.803-683.0		AX35
9.802-408.0	369136A	AX36
9.802-409.0		AX37
9.802-410.0	5-602038	AX38
8.715-682.0	5-602041	AX41
9.802-411.0	5-602042	AX42
9.802-412.0	5-604022	BX22
9.802-413.0		BX32
9.802-414.0	369134B	BX34
9.802-415.0	369135B	BX35
9.802-416.0	369136B	BX36
8.715-698.0	369137X	BX37
8.710-745.0	369138B	BX38
9.802-418.0		BX39
8.710-748.0	369140B	BX40
9.802-419.0	369142B	BX42
8.710-754.0	369143B	BX43
9.802-421.0	369144B	BX44
8.710-756.0	369145B	BX45
8.715.706.0		BX46
8.715-708.0		BX48
8.715-710.0		BX51

## Pulley Bushings

### Split Taper "H"



- Split taper, malleable iron
- Keyed to both shaft and hub
- Highest torque carrying capacity

- For use with "H" sheaves, above.

Part No.	Original No.	Size
<b>Motor / Engine Bushings</b>		
9.802-397.0		H x 5/8"
9.803-897.0		H x 3/4"
8.715-633.0		H x 7/8"
9.802-399.0		H x 1"
9.802-400.0		H x 1-1/8"
9.802-401.0		H x 1-3/8"
8.715-638.0	5-511139	H x 1-3/8"-6B, Spline

### Pump Bushings

8.711-118.0	376320	H x 20mm
8.711-119.0	376322	H x 22mm
8.711-121.0	376324	H x 24mm
8.711-122.0	376325	H x 25mm
8.711-123.0	376330	H x 30mm
8.711-124.0	376332	H x 32mm
8.711-125.0	376335	H x 35mm

## Pulleys

- High quality cast iron pulleys
- Cast design
- All sizes available



AK pulley



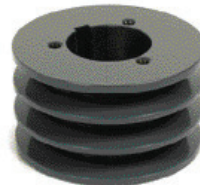
2AK pulley



BK pulley



2BK pulley



3TB pulley

Part No.	Original No.	Size	OD
8.715-517.0	5-40102158	AK21*	2.10"
8.715-519.0	5-40102358	AK23*	2.30"
9.802-368.0		AK25*	2.50"
8.804-028.0		AK28*	2.80"
8.715-524.0		AK30H	3.05"
8.715-527.0	5-40103201	AK32H	3.25"
8.715-530.0	5-40103401	AK34H	3.45"
9.803-898.0	5-40103901	AK39H	3.75"
9.802-369.0	5-40107401	AK74H	7.25"
8.715-538.0	5-40108401	AK84H	8.25"
8.715-539.0	5-40108901	AK89H	8.75"
9.803-298.0	5-40203001	2AK30H	3.05"
9.802-371.0	5-40203201	2AK32H	3.25"
9.804-047.0	5-40203401	2AK34H	3.45"
8.715-546.0	5-40204401	2AK44H	4.75"
8.715-548.0	5-40204901	2AK49H	4.25"
8.715-549.0	5-40205101	2AK51H	4.95"
9.802-372.0	5-40205401	2AK54H	5.25"
8.715-555.0	5-40206401	2AK64H	6.25"
9.802-374.0	5-40207401	2AK74H	7.25"
9.802-375.0	5-40208401	2AK84H	8.25"
9.803-548.0	5-40209401	2AK94H	9.25"
8.715-560.0		BK30H	3.30"
9.802-377.0		BK32H	3.35"
9.802-379.0		BK36H	3.75"
8.715-566.0		BK40H	3.95"
8.710-819.0	372586	BK45H	4.25"
8.710-823.0	372596T	BK47H	4.45"
8.710-831.0	372650T	BK52H	4.95"
8.715-567.0	5-40405701	BK57H	5.45"
8.710-837.0	372695	BK60H	5.75"
8.710-841.0	372704T	BK62H	5.95"
8.715-568.0	5-40406501	BK65H	6.25"
8.715-570.0		BK70H	6.75"
8.715-571.0		BK75H	7.25"
9.802-380.0		BK80H	7.75"
8.715-573.0		BK85H	8.25"
8.710-858.0	372799T	BK100H	9.75"
8.715-576.0		2BK32H	3.35"
8.710-811.0	372499T	2BK34H	3.55"
8.802-383.0		2BK36H	3.76"
8.802-384.0		2BK40H	3.95"
8.802-385.0		2BK45H	4.25"
8.715-582.0		2BK47H	4.45"
8.715-583.0	5-40505001	2BK50H	4.75"
9.802-386.0		2BK52H	4.95"
9.802-387.0		2BK60H	5.75"
8.715-588.0		2BK62H	5.95"
9.804-060.0	5-40506501	2BK65H	6.25"
9.802-388.0	5-40506701	2BK67H	6.45"
9.715-591.0		2BK65H	6.75"
9.802-389.0	372774T	2BK80H	7.75"
8.715-593.0	372790T	2BK90H	8.75"
9.802-391.0		2BK100H	9.75"
8.715-598.0	5-406040	2TB40	4.35"
9.802-392.0	5-407034	3TB34	3.75"
9.802-394.0	5-407040	3TB40	4.35"

\*x 5/8" Bore