

Custom Built Power Units Base Frames 5-68

FEATURES

- Rugged, heavy-duty construction in a compact, stream-line style for convenient stationary installation or portable unit with optional wheels and handle and contour formed base ends for safety.
- Base plate of 3/8", 2 mil Epoxy Powder Coated Steel or 304SS with rugged 1/4" channel steel base supports for maximum weight load and minimum flexing.
- Free standing or bolt down leveling and vibration shock mounts.
- Two screw adjustable motor base in epoxy coated or 304SS to simplify belt tension and adjustment.
- Reinforced, 13-gauge flattened, expanded metal, 1/2" mesh belt guard offers ventilation and safety.
- 50Hz or 60Hz electric motors, hydraulic motors, gas or diesel engine drives available.
- Flow and pressure tested before shipment with exceptionally fast turn-around time of 2-4 weeks on most units.

SPECIFICATIONS

The specifications will vary with each unit and are determined by the requirements of the application for which the Power Unit is intended. Single or multiple Power Units can be assembled for larger capacity systems. Stationary or portable units with handles and wheels are available. Standard, premium efficiency, washdown and explosion proof motors in either 60Hz or 50Hz can be specified.

SELECTION

Determine the intended application and installation requirements. Compare this data with the various pump and accessory options and complete the Power Unit Quotation Checklist.

INSTALLATION

Carefully read and follow all the recommendations included in the Power Unit Quote and Power Unit Start-up Checklist. All electrical connections should be done by a qualified electrician.

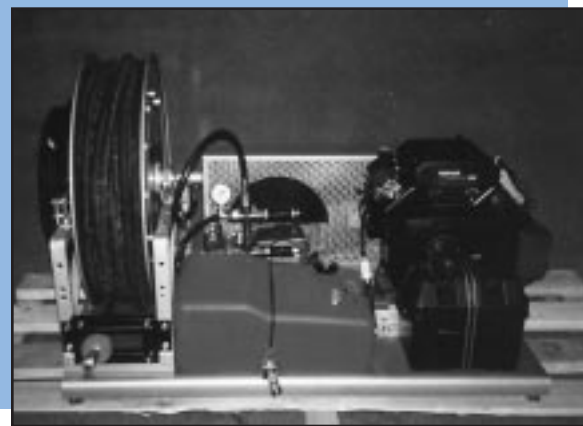
OPERATION

All Power Units are flow and pressure tested prior to shipment. After transport, belt tension should be checked before operation. Operation should be within the parameters originally requested in the Quotation Checklist and specified in the Quote. Operation beyond the flow and pressure, temperature or type of fluid specified in the Quote may require changes to the drive components or accessories of the Power Unit. Without the necessary changes, the Power Unit may see premature wear, damage to the system or void the warranty. Consult the factory before operation if changes are necessary.

“Customer confidence is our greatest asset”

Single or Multiple Pump Custom Built Power Units

Minimize time and cost for designing, sourcing and fabricating.



Hot Water Propulsion

35AG70 Power Unit - 4.5 GPM, 5000 PSI

Breaks up frozen solutions fast

A Kohler powered Model 70 CAT PUMP mounted on an epoxy-coated, shock protected base. Equipped with regulator, relief valve, filter, gauge, hose reel and 100 ft. of 1/2" hose.

Designed for truck mounted, portable installation. Pumps hot water. Propels a special "Go-Devil" nozzle to break up frozen lines and culverts to enhance drainage water flow and minimize flooding.

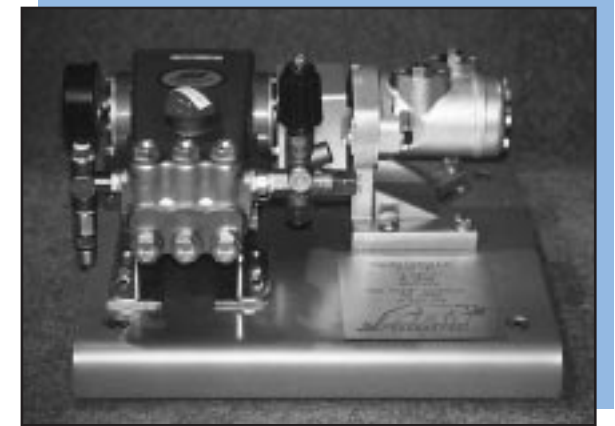
Portable Pressure Washer/Sewer Cleaner

15AG45 Power Unit - 4.5 GPM, 3000 PSI

Compact, hydraulic unit for easy multiple site cleaning

Hydraulic powered Model 45 CAT PUMP mounted on an epoxy-coated, shock protected base. Equipped with regulator, relief valve and gauge.

Ultra-compact truck mount, portable unit for high pressure cleaning and/or sewer cleaning.



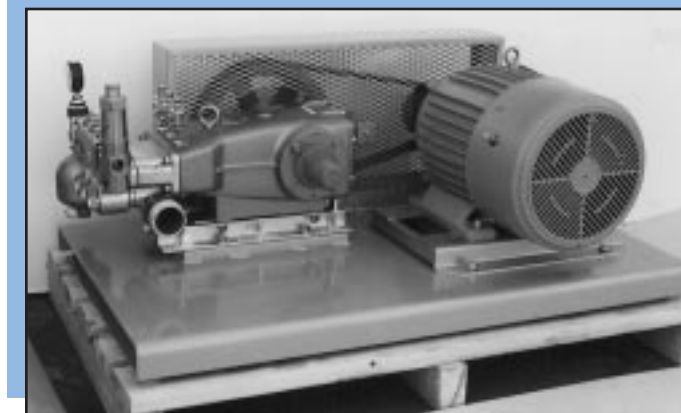
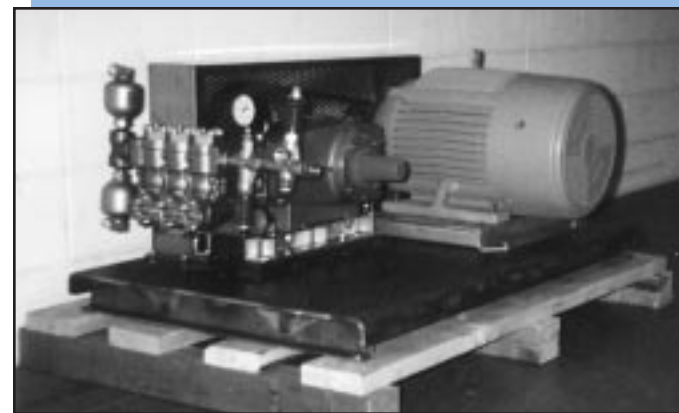
Ferry Boat Cleaning

35AG3517 Power Unit - 14 GPM, 3000 PSI

Improves performance and safety

Model 3517 CAT PUMP powered by a 30 HP hostile duty electric motor, mounted on a epoxy-coated, shock protected base. Equipped with unloader, relief valve, Prrrrr-O-Lator, gauge, inlet filter and multiple guns.

Designed for ferry boat deck and equipment cleaning to improve appearance and maintain good operating performance.



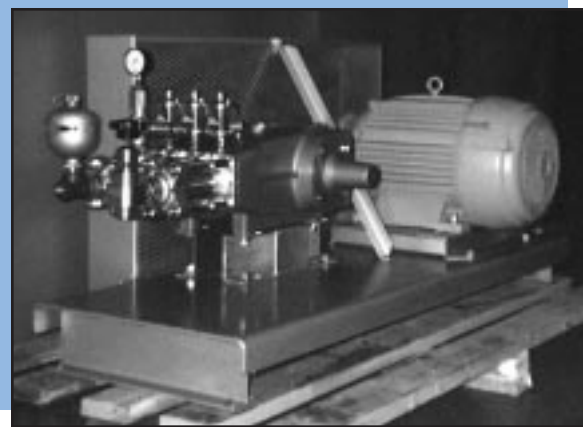
Fire Suppression System

35AG3535 Power Unit - 30 GPM, 1000 PSI

Contains fire without saturation

Model 3535 CAT PUMP powered by a 25 HP electric motor, mounted on an epoxy-coated, shock protected base. Equipped with pressure regulator, Prrrrr-O-Lator, gauge, inlet filter and Captive Acceleration Tube.

Designed to emit ultra-fine mist upon threat of fire in hotels, warehouses, ships and airplanes. Contains fire without saturation reducing water damage.



Multi-Nozzle Conveyer Cleaner

60AG6040 Power Unit - 40 GPM, 1500 PSI

50% improved efficiency and cleaning results

Model 6040 CAT PUMP powered by a 50 HP hostile duty, electric motor, mounted on an epoxy-coated, shock protected base. Equipped with regulator, relief valve, gauge, Prrrrr-O-Lator and dual filters.

Designed for a multi-nozzle conveyer wash system operating 5 banks of nozzles expanding capacity and efficiency of cleaning system.

Testing Rock Formations

15AG70 Power Unit - 9.0 GPM, 5000 PSI

Environmentally safe

Hydraulic powered, gear belt driven, dual Model 70 CAT PUMPS mounted on an epoxy-coated, shock protected base. Pumps synchronized to reduce pulsation to less than 1%.

Designed for testing rock formations for the evaluation of underground water tables and earthquake patterns.



Multi-Pump Process Cleaning System

68AG6821 Power Unit - 100 GPM, 3000 PSI

Increases productivity by 24%

Four SS Model 6821 Power Units mounted on epoxy-coated, shock protected bases. Powered by four 50 HP hostile duty electric motors and equipped with stainless steel regulators, relief valves, Prrrrr-O-Lators, and gauges.

Designed for a multi-shift cleaning process removing heavy adhesive labels.



Portable In-Plant Cleaning Unit

15AG1050 Power Unit - 10 GPM, 2200 PSI

Improved safety and performance

Model 1050 CAT PUMP powered by a 15 HP premium efficiency electric motor, mounted on an epoxy-coated, shock protected base with wheels and handle. Equipped with unloader, relief valve, Prrrrr-O-Lator, gauge and inlet filter.

Designed for portability while cleaning floors, walls, conveyer, garbage containers, etc. in a manufacturing facility to maintain safe and clean working conditions.

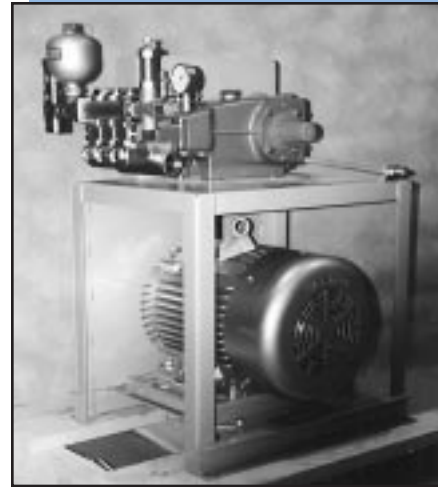
Dump Truck Undercarriage Cleaner

35AG3535 Power Unit - 35 GPM, 1200 PSI

Minimizes equipment room space

This model 3535 is powered by a 30 HP premium efficiency electric motor. Mounted on a stacked epoxy-coated base plate. Equipped with regulator, relief valve, Prrrrr-O-Lator, dual filters, and pressure gauge.

Provides continuous-duty cleaning of undercarriages on dump trucks, low equipment maintenance and fits into a very compact space.



Central Cleaning System

35AG3521 Power Unit - 20 GPM, 2000 PSI

Effective cleaning of metal components minimizes assembly problems

This stainless steel, viton fitted Model 3521.0110 is mounted on an epoxy-coated base with shock mounts and is powered by a 30 HP premium efficiency motor. The system also has a pressure regulator, gauge, Prrrrr-O-Lator and a C.A.T. (captive acceleration tube) for stabilizing the inlet pressure.

Provides optimum economy in this continuous-duty, multiple-nozzle cleaning operation.

Hot Water Cleaner

15AG820 Power Unit - 10 GPM, 820 PSI

Fast, efficient military equipment washdown

This model 820.0110 is viton equipped to handle the +120°F cleaning needs and is powered by a 7.5 HP washdown electric motor. Mounted on an epoxy-coated base with shock mounts, a multi-gun pressure regulating unloader to control the pressure for four the guns, a Prrrrr-O-Lator and pressure gauge to monitor the system performance.



High Pressure Vat Cleaning

68AG6821 Power Unit - 25 GPM, 3000 PSI

Greater efficiency and improved cleaning

Dual, stainless steel Model 6821 CAT PUMPS each powered by 50 Hp electric motors mounted on a stainless steel base with shock mounts. Equipped with stainless steel regulator, relief valve, Prrrrr-O-Lator and pressure gauge.

Provides high quality cleaning and reduces cleaning time by 50%. Enhances consistent quality product by removing residue from large vats between production batches.

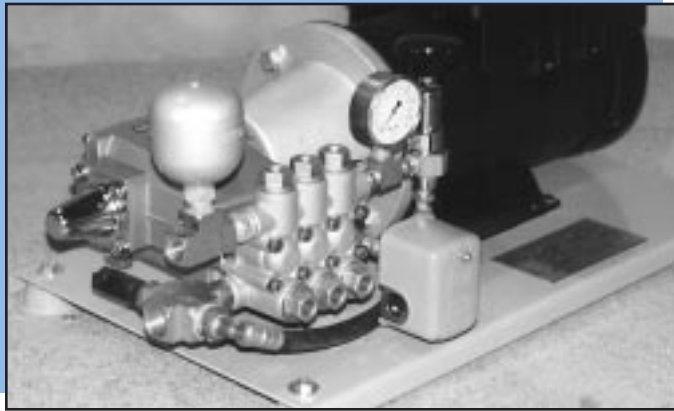
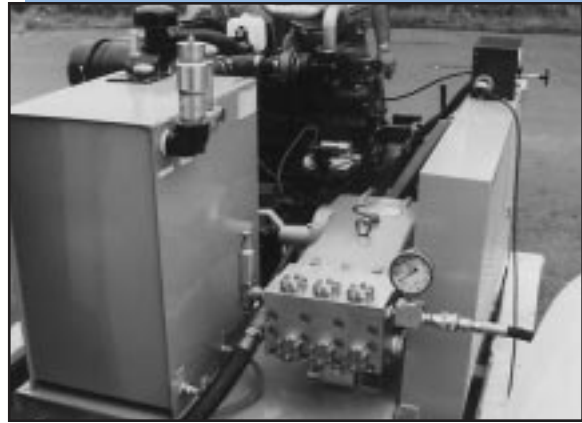
Ship Hull Cleaning

68AG6811 Power Unit - 15 GPM, 7000 PSI

Fresh or sea water wet-blasting is environmentally safe and energy efficient

This 316SSL block-style Model 6811 CAT PUMP is powered by an 83 Hp diesel engine and is equipped with a pressure gauge and safety relief valve.

System designed for removing rust, paint or barnacles from ship hulls with the flexibility of either fresh or sea water.



Lumber Conditioning

3AG1120 Power Unit - 4.2 GPM, 1000 PSI

Moisture control system saves tremendous energy and improves the quality of the dried wood

This direct-drive 3CP CAT PUMP is powered by a vari-drive motor and equipped with regulator, relief valve, Prrrrr-O-Lator, C.A.T., Thermo Valve, gauge and pressure switch for maximum control and protection.

System delivers micro-fine mist into kiln interior to balance moisture during the lumber drying process, critical in controlling the quality of lumber for the furniture industry.

Power Unit Applications

- Saltwater Reverse Osmosis
- Central Cleaning Systems
- Bakery Sanitizing
- Portable Rubber Remover
- Hydraulic Powered Cleaner
- Hydrostatic Testing
- Boiler Feed
- Wet Sandblasting
- Arch Misting Systems
- Gypsum Cutting
- Wastewater Re-injection
- Fish Scale Removal
- Lumber Humidity Control
- Label Removal
- Paint and Rust Removal
- Golf Course Injection and Aeration System
- Agriculture Fertilizer and Pesticide Injection
- Sewer and Pipe Cleaning
- Odor Control
- Homogenization
- Machining Flushing and Cooling
- Mold and Casting Cleaning
- Moss and Mildew Treatment
- Pesticide Injection
- Mining Dust Suppression
- Heavy Equipment Drive-thru Arch Cleaning
- Ham, Chicken, Turkey Deboning
- Laser Cutting
- Conveyor Cleaning
- Food Processing
- Laundry Extracting and Cleaning
- Window Awning and Blind Cleaning
- Slaughter and Smoke House Cleaning
- Swimming Pool Cleaning
- Temperature Control - Hen Houses
- Outdoor Cattle, Swine and Horse Cooling System
- Underground Tank Cleaning
- Airplane De-icing
- Screen Cleaning
- Underground Boring

Power Unit Quotation Checklist

CAT PUMPS MODEL SELECTION

5-10 FRAME

- 5CP6120 Pump - BB
- 5CP6121 Pump - SS
- 70 Pump - BB
- 781 Pump - SSLB
- 650 Pump - BB
- 651 Pump - SS
- 681 Pump - SSLB
- 820 Pump - BB
- 821 Pump - S
- 1010 Pump - BB
- 1011 Pump - S

15-25 FRAME

- 1050 Pump - BB
- 1057 Pump - NAB
- 1051 Pump - SS
- 1520 Pump - BB
- 1521 Pump - S
- 1851 Pump - SSLB
- 2520 Pump - BB
- 2521 Pump - S
- 2530 Pump - BB
- 2531 Pump - SS
- 2537 Pump - NAB
- 2831 Pump - SSLB

35-38 FRAME

- 3507 Pump - NAB
- 3517 Pump - NAB
- 3520 Pump - BB
- 3521 Pump - SS
- 3527 Pump - NAB

Other

35-38 FRAME

- 3535 Pump - BB
- 3537 Pump - NAB
- 3531 Pump - SS
- 3545 Pump - BB
- 3541 Pump - SS
- 3801 Pump - SSLB
- 3811 Pump - SSLB
- 3821 Pump - SSLB
- 3831 Pump - SSLB
- 3841 Pump - SSLB

60-68 FRAME

- 6020 Pump - BB
- 6021 Pump - S
- 6040 Pump - BB
- 6041 Pump - S
- 6760 Pump - BB
- 6761 Pump - SS
- 6767 Pump - NAB
- 6811 Pump - SSLB
- 6821 Pump - SSLB
- 6831 Pump - SSLB
- 6841 Pump - SSLB
- 6861 Pump - SSLB

BB=Brass NAB=Nickel Aluminum Bronze S=304SS SS=316SS SSLB=316SSL Block-Style Manifold

APPLICATION

SYSTEM SPECIFICATIONS

GPM _____ RPM _____

PSI: Min. _____ Max. _____ Working _____

Duty: Interm _____ Cont _____ Hrs/Day _____

Head Materials _____

Elastomers _____

Pumping Conditions

Fluid: Freshwater _____ Sea Water _____ Hard Water _____

Chemicals: _____

Fluid Temp: Amb. _____ <140°F _____ <180°F _____

Inlet PSI _____ Gravity _____ City _____

Tank Size _____ Booster _____ Suction _____

Environment Temp. _____ Noise Level _____

Elevation _____

Drive Mechanism

V-Belt _____ Coupling _____

Gearbox _____

Vari-Drive _____

Hydraulic Drive _____

Electric Motor Drive (All Motors TEFC)

Voltage _____ Phase _____

RPM _____ Amps _____

Horse Power _____ Cycle _____ 50 _____ 60 _____

Isol. Class _____ TEFC _____ Open Drip _____

Hazardous _____ San.Wash Down _____ Explosion _____

Hostile Duty _____ Prem. Eff. _____

ACCESSORIES

Inlet Section:

C.A.T. (w/Adapters) _____

Dual Filters _____

Inlet Pressure Regulator _____

Oilers _____

Discharge Section:

Regulator/Unloader _____

Pulsation Dampener _____

Safety Valve/Pop-Off Valve _____

Thermo Valve _____

Pressure Gauge _____

High Pressure Hose _____

Nozzles _____ Guns _____ Lances _____

Other _____

FRAME/SKID

Base Plate w/Belt Guard, Shock Mounts _____

Epoxy Coated _____ S.S. _____

Wheels _____ Swivel _____ Locking _____

Handle _____

OTHER TOTAL SYSTEM DATA

Portable _____ Stationary _____ Shipboard _____

Enclosed (Ventilated) _____

Sketch Provided _____ Drawing Req. _____

Planned Maintenance Cycle _____

Date Quote Needed

Qty Unit(s) Needed

Additional Comments

Requesting Company

Name _____

Company _____

Address _____

Phone _____

FAX _____

Copy this page and Fax to CAT PUMPS at 612-780-2958

Products described hereon are covered by one or more of the following U.S. patents 3558244, 3652188, 3809508, 3920356, 3930756 and 5035580

Mar 1999 12829

World Headquarters

CAT PUMPS

1681 - 94th Lane N.E. Minneapolis, MN 55449-4324

Phone (612) 780-5440 — FAX (612) 780-2958

e-mail: sales@catpumps.com

www.catpumps.com

International Inquiries

FAX (612) 785-4443

e-mail: intlsales@catpumps.com



The Pump with "Nine Lives"

CAT PUMPS (U.K.) LTD.

1 Fleet Business Park, Sandy Lane, Church Crookham, Fleet

Hampshire GU13 0BF, England

Phone Fleet 44 1252-622031 — Fax 44 1252-626655

N.V. CAT PUMPS INTERNATIONAL S.A.

Heiveldkens 6A, 2550 Kontich, Belgium

Phone 32-3-450.71.50 — Fax 32-3-450.71.51

e-mail: cpi@catpumps.be

CAT PUMPS DEUTSCHLAND GmbH

Buchwiese 2, D-65510 Idstein, Germany

Phone 49 6126-93030 — Fax 49 6126-930333

e-mail: catpumps@t-online.de