



Stainless Steel
**Custom-II
 Shut-off Gun**

Standard Model **36126**

FEATURES

- Durable high strength, heat resistant body and trigger means longer life, less breakage.
- Contour design and smooth trigger action reduces operator fatigue.
- Quality construction stainless steel ball and seat assures thousands of continuous cycles.
- Special safety-lock prevents unintentional operation.
- Special 303 Stainless Steel models for additional compatibility.

SELECTION: Select a gun to match your system flow and pressure requirements, temperature and function being performed.

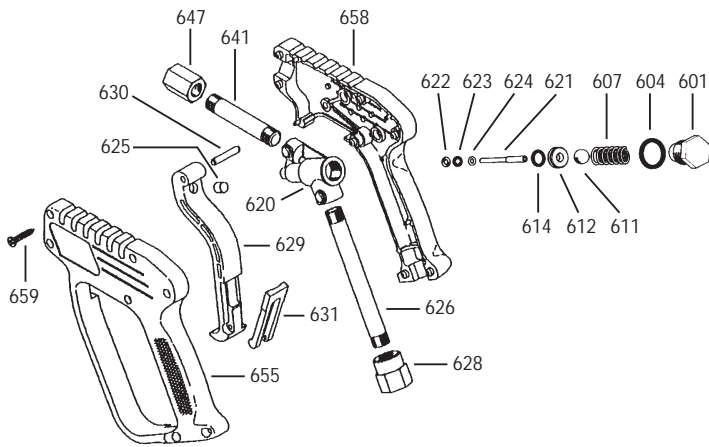
INSTALLATION: Install the appropriate relief valve when using a shut-off gun to avoid pressure spikes when the gun is shut off. Severe damage can occur to your system without this device. DO NOT operate in freezing conditions.

SPECIFICATIONS

	U.S. Measure	Metric Measure
Maximum Flow	10.5 GPM	(40 L/M)
Maximum Pressure	4000 PSI	(280 BAR)
Maximum Temperature	300° F	(150° C)
Inlet Port (1)	3/8" NPT	(3/8" NPT)
Discharge Port (1)	1/4" NPT	(1/4" NPT)
Weight	23.4 oz.	(0.728 kg)
Dimensions	8.26" x 5.39" x 1.25" (210 x 137 x 32mm)	

OPERATION: Flow through the gun occurs by squeezing the trigger on the gun. This activates the actuator rod, lifting the ball off the seat, allowing the pumped fluid to flow through the valve body chamber in the gun. Releasing the trigger shuts off the flow.

EXPLODED VIEW



PARTS LIST

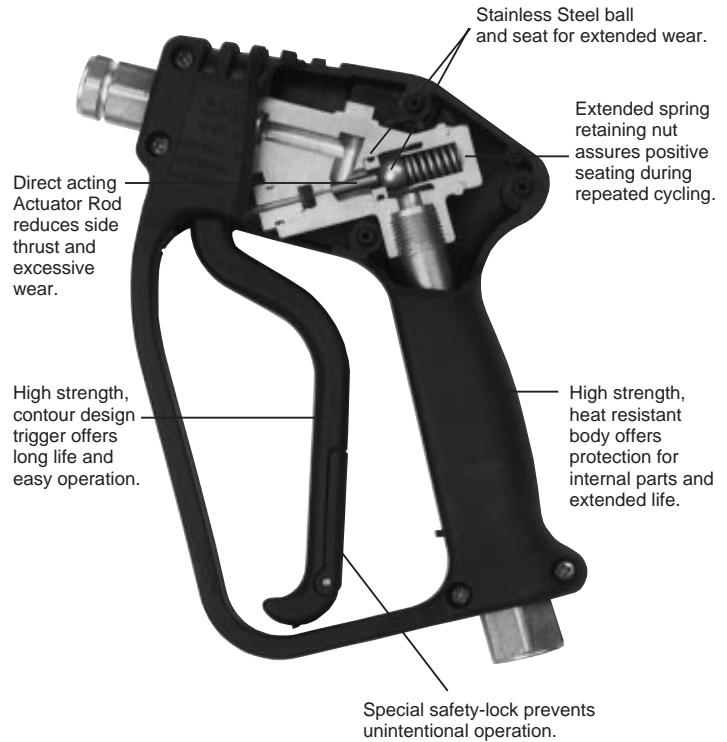
ITEM	PN	MATL	DESCRIPTION	QTY
601	33671	S	Nut, Retaining (M16)	1
604	33378	NBR	O-Ring, Nut	1
607	33379	SS	Spring	1
611	32289	S	Ball	1
612	35004	SS	Seat	1
614	32008	NBR	O-Ring, Seat	1
620	—	S	Body, Valve	1
621	35073	S	Rod, Actuator, Concave End	1
622	35074	PTFE	Back-up-Ring, Actuator Rod	1
623	35020	FPM	O-Ring, Actuator Rod	1
624	39004	SS	Washer, Actuator Rod	1
625	33655	S	Striker	1
626	39124	—	Pipe, Inlet	1
628	39837	SSS	Fitting, Inlet (3/8" NPT)	1
629	33306	NY	Trigger	1
630	33676	BB	Pin, Trigger (M3x20)	1
631	33650	NY	Safety Latch	1
641	39141	—	Pipe, Discharge	1
647	39040	SSS	Fitting, Discharge (1/4" NPT)	1
655	31762	—	Handle, Left Half	1
658	31761	—	Handle, Right Half	1
659	32877	STZP	Screws, Self Threading (M3.5x18)	7
665	31400	—	Handle Assy (Incls: 655,658,659)	1
667	39629	—	Trigger Assy (Incls: 625,629,630,631)	1
668	35007	—	Kit, Gun Repair (Incls: 604,611,612,614,621,622,623)	1

Italics are optional items.

MATERIAL CODES (Not Part of Part Number):

BB=Brass FPM=Fluorocarbon (Viton®) NBR=Medium Nitrile (Buna-N)
 NY=Nylon PTFE=Polytetrafluoroethylene (Teflon®) S=304SS SS=316SS
 SSS=416SS STZP=Steel/Zinc Plated

CUTAWAY



WARNING

**Severe injury can occur with high pressure spray.
 Do not allow spray to contact any part of body.**

TROUBLESHOOTING

Water leaking out the discharge of the gun

- Object lodged between the seat and ball.
- Seat worn.
- O-Ring under seat worn.

Water leaking out the lever area

- O-Ring around push rod worn.

OPTIONAL LANCES

32042	Square Insulated Single Lance - S.S.—36"-1/4"
33200	Square Insulated Dual Lance - S.S.—43"-1/4"

WARRANTY

90 Day Warranty
 Refer to complete Cat Pump Warranty for further information.

Products described hereon are covered by one or more of the following U.S. patents 3558244, 3652188, 3809508, 3920356, 3930756 and 5035580

July 1998 6873

World Headquarters

CAT PUMPS

1681 - 94th Lane N.E. Minneapolis, MN 55449-4324

Phone (612) 780-5440 — FAX (612) 780-2958

e-mail: sales@catpumps.com

www.catpumps.com

International Inquiries

FAX (612) 785-4443

e-mail: intlsales@catpumps.com



The Pump with "Nine Lives"

CAT PUMPS (U.K.) LTD.

1 Fleet Business Park, Sandy Lane, Church Crookham, Fleet
 Hampshire GU13 0BF, England

Phone Fleet 44 1252-622031 — Fax 44 1252-626655

N.V. CAT PUMPS INTERNATIONAL S.A.

Heiveldekens 6A, 2550 Kontich, Belgium
 Phone 32-3-450.71.50 — Fax 32-3-450.71.51

e-mail: cpi@catpumps.be

CAT PUMPS DEUTSCHLAND GmbH

Buchwiese 2, D-65510 Idstein, Germany
 Phone 49 6126-93030 — Fax 49 6126-930333

e-mail: catpumps@t-online.de