



## High Pressure Relief Valve

Model

7196

### FEATURES

- Provides system pressure setting and protection for single or multiple gun and pump systems.
- Lightweight, compact design quickly and conveniently mounts directly into discharge line.
- Provides back-up protection to assure complete pressure relief for maximum pump and system protection.

**SELECTION:** Select a Relief Valve to meet or exceed the flow and pressure requirements of the system.

**INSTALLATION:** The Relief Valve should be mounted in the discharge line **before any other accessories in the system** to provide optimum

### SPECIFICATIONS

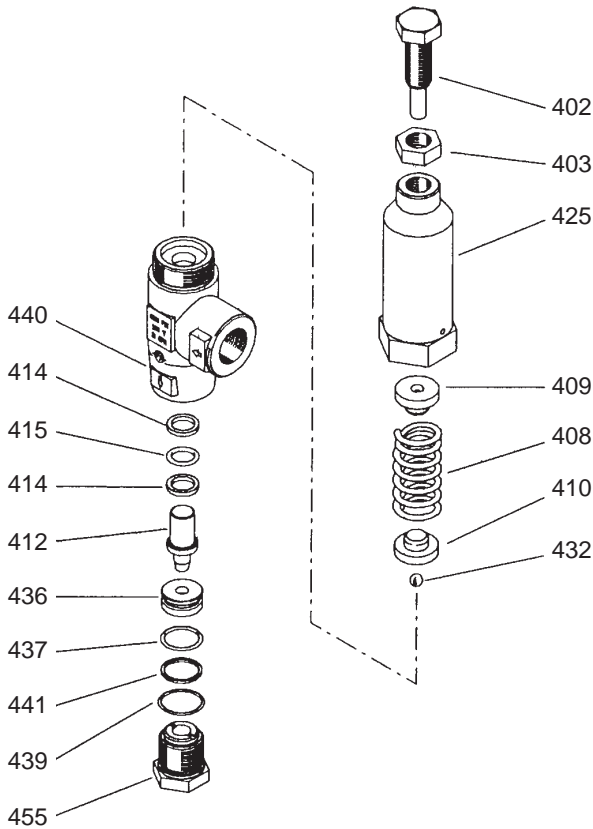
	U.S. Measure	Metric Measure
Flow Range .....	1-21 GPM	(3.8 to 80 L/M)
Pressure Range.....	100-7250 PSI	(7 to 350 BAR)
Maximum Temperature .....	194°F	(90°C)
Inlet Port.....	1/2" BSPF	(1/2" BSPF)
By-Pass Port .....	3/8" BSPF	(3/8" BSPF)
Weight .....	3.12 lbs.	(1.47 Kg)
Dimensions.....	8.74" x 1.96" x 1.53"	(222 x 50 x 39 mm)

protection to the pump. The by-pass from the Relief Valve may be returned to the reservoir or drain to the floor. By-pass returned to the inlet of the pump should be done with caution to avoid pressure spikes or excessive heat build-up from recirculating fluids.

continued on back

*“Customer confidence is our greatest asset”*

## EXPLODED VIEW



**OPERATION:** The adjusting screw is located at the top of the Relief Valve, the inlet port is located on the side and the by-pass port is located at the bottom. Using a wrench, the pressure setting may be **increased** by turning **clockwise** or **decreased** by turning **counterclockwise**.

The Relief Valve should be set in **small** increments. Check your pressure gauge following each adjustment. It may be convenient to **set your unloader or regulating device** for the system working pressure in **small** increments, as you are setting the Relief Valve. The final adjustment for the Relief Valve should be set to relieve at approximately **200 PSI above the system working pressure**.

**REMEMBER, THE RELIEF VALVE IS A SECONDARY SAFETY DEVICE. IT DOES NOT REPLACE A PRESSURE REGULATOR OR UNLOADER.**

## PARTS LIST

ITEM	P/N	MATL	DESCRIPTION	QTY
402	33833	SS	Screw, Adjusting	1
403	33823	SS	Nut, Locking (M14x2)	1
408	33804	STL	Spring	1
409	33815	BB	Guide, Spring (Upper)	1
410	33814	BB	Guide, Spring (Lower)	1
412	33816	SS	Piston	1
414	33813	PTFE	Back-up-Ring, Piston	2
415	39008	NBR	O-Ring, Piston	1
425	—	BB	Housing, Spring	1
432	33825	SS	Ball	1
436	33826	SS	Seat	1
437	33044	NBR	O-Ring, Seat	1
439	33808	NBR	O-Ring, By-Pass Fitting	1
440	—	BB	Body	1
441	33803	NBR	Back-up-Ring, By-Pass Fitting	1
455	33829	BB	Fitting, By-Pass (M24x1)	1
468	33840	NBR	O-Ring Kit <i>(Incls: 414, 415, 437, 439, 441)</i>	1

*Italics are optional items.*

MATERIAL CODES (Not Part of Part Number):

BB=Brass NBR=Medium Nitrile (Buna-N)

PTFE=Polytetrafluoroethylene (Teflon®) SS=316SS STL=Steel

## TROUBLESHOOTING

Valve chatters	<ul style="list-style-type: none"> <li>• Valve is improperly set. Repeat adjustment procedure.</li> </ul>
Valve continually by-passes	<ul style="list-style-type: none"> <li>• Seat or piston valve is worn. Replace as needed.</li> </ul>
Leaking out the top of valve	<ul style="list-style-type: none"> <li>• O-ring on piston worn or cut. Replace as needed.</li> </ul>

## WARRANTY

### 90 Day Warranty

Refer to complete Cat Pump Warranty for further information.

Products described hereon are covered by one or more of the following U.S. patents 3558244, 3652188, 3809508, 3920356, 3930756 and 5035580

Nov 1998 10892

### World Headquarters

#### CAT PUMPS

1681 - 94th Lane N.E. Minneapolis, MN 55449-4324

Phone (612) 780-5440 — FAX (612) 780-2958

e-mail: sales@catpumps.com

www.catpumps.com

### International Inquiries

FAX (612) 785-4443

e-mail: intlsales@catpumps.com



The Pump with "Nine Lives"

### CAT PUMPS (U.K.) LTD.

1 Fleet Business Park, Sandy Lane, Church Crookham, Fleet

Hampshire GU13 0BF, England

Phone Fleet 44 1252-622031 — Fax 44 1252-626655

### N.V. CAT PUMPS INTERNATIONAL S.A.

Heiveldekens 6A, 2550 Kontich, Belgium

Phone 32-3-450.71.50 — Fax 32-3-450.71.51

e-mail: cpi@catpumps.be

### CAT PUMPS DEUTSCHLAND GmbH

Buchwiese 2, D-65510 Idstein, Germany

Phone 49 6126-93030 — Fax 49 6126-930333

e-mail: catpumps@t-online.de